

Windows 8 Step by Step Upgrade Guide

Contents

1. Before you Start Upgrading

- 1. Windows 8 Setup Process**
- 2. System Requirements**
- 3. Preparations**

2. Installation Options

3. Upgrade Installation using ESD

4. Upgrade Installation using the Installation DVD

5. Clean Installation using the Installation DVD

6. User Settings

- 1. Personalize**
- 2. Wireless**
- 3. Custom Settings**
- 4. Sign in to Your PC**

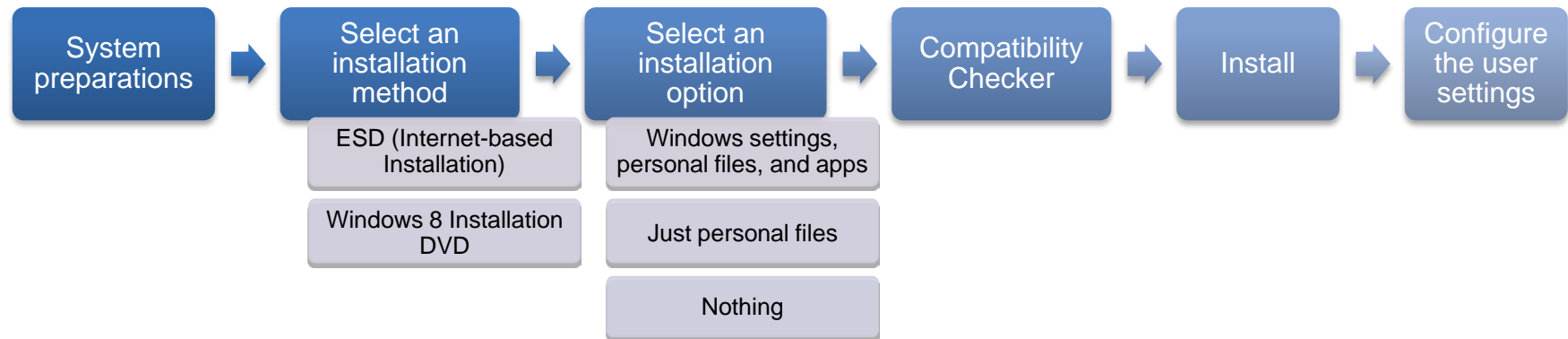
7. Checklist after Completing the Installation

- 1. Windows 8 System Check**
- 2. Windows 8 Upgrade FAQ**

1. Before you start upgrading

1. Windows 8 Setup Process

◆ Windows 8 Setup Process



※ **ESD (Electronic Software Download):** An installation method that accesses the Microsoft Upgrade website. You can access the site through the internet and save the software on a DVD/USB device for later installation.

※ **Windows 8 Installation DVD:** An installation method using the DVD purchased from the Microsoft Upgrade website.

※ **This user guide provides the installation instructions for 'ESD (Internet-based installation)' and the 'Windows 8 Installation DVD' only.**

2. System Requirements

◆ Windows 8 System Requirements

- Processor: 1 GHz or higher
- Memory: 1 GB (32-bit) / 2 GB (64-bit)
- Free Hard Disk Space : 16 GB (32-bit) / 20 GB (64-bit) minimum
- Graphics Adapter: A graphics adapter which supports Microsoft DirectX 9 or higher
- Additional Requirements
 - For multi-touch usage, monitor or tablet that support multi-touch is required
 - A minimum screen resolution of 1024 * 768 is required.
 - To use Snap mode on the Start page, a minimum screen resolution of 1366 * 768 is required.
 - To perform Windows updates and Microsoft account associations, an internet connection is required.
- Supported OS and Retainable Items
 - Windows 7: Maintains Windows settings, personal files, and apps.
 - Windows Vista SP1 or higher: Maintains the Windows settings and personal files.
 - Windows XP SP3 or higher : Maintains just personal files.

※ If you purchased a Windows 7 PC during the Upgrade promotion period, you can purchase Windows 8 at a corresponding promotional price from the Microsoft site. You can also download and install the 'SW Update' program to set up the Windows 8 drivers and software applications available for each supported models.

Before you start upgrading

Installation Options

Upgrade Installation using ESD

Upgrade Installation using the Installation DVD

Clean Installation using the Installation DVD

User Settings

Checklist after Completing the Installation

3. Preparations

◆ Before Installing

- Save all your important data before installing Windows 8
 - to an external storage device such as a USB device, external hard disk, CD/DVD, etc.
 - or to a different partition where Windows is not installed.
- Connect to a network (wired network recommended)
- Update the latest Windows 7 BIOS
- Update and install the latest applications and drivers.
- Connect system to AC power

◆ Windows 8 function restrictions after upgrading

- Some Function Keys may operate differently from those of Windows 7 depending on the model

Before you start upgrading

Installation Options

Upgrade Installation using ESD

Upgrade Installation using the Installation DVD

Clean Installation using the Installation DVD

User Settings

Checklist after Completing the Installation

2. Windows 8 Setup – Installation Options

Installation Options

◆ Upgrade Installation

- Installable method: ESD, Windows 8 Installation DVD
- You can keep your current Windows settings, personal files and apps in Windows 7. Some Windows 8 incompatible apps must be deleted before the upgrade. A list of these apps will be provided during the upgrade process.

Installation Options	Retainable Items
Windows settings, personal files and apps (Possible only when installing Windows 8 in the same language and 32 or 64 bit version as Windows 7.)	<ul style="list-style-type: none">• IE Favorites, Desktop background (custom image), accessibility• My Documents, My Music, My Videos Folder, files and folders on the Desktop, other custom folders• Windows 7 apps that are compatible with Windows 8
Just personal files	<ul style="list-style-type: none">• My Documents, My Music, My Videos Folder, files and folders on the Desktop, other custom folders
Nothing	<ul style="list-style-type: none">• Keeps some of previous data in the Windows.old folder.

※ **ESD (Electronic Software Download)**: An installation method that accesses the Microsoft Upgrade website. You can access the site through the internet and save the Software on a DVD/USB device for later installation.

Before you start upgrading

Installation Options

Upgrade Installation using ESD

Upgrade Installation using the Installation DVD

Clean Installation using the Installation DVD

User Settings

Checklist after Completing the Installation

Installation Options

◆ Clean Installation

- Installable Method: Windows 8 Installation DVD
- Provides a clean system environment
 - Recommended if the Windows 7 system is not operating properly, is infected by malware, spyware, etc., or too many unnecessary programs are installed.
- If you want to create or delete partitions, boot up your PC from the Windows 8 Installation DVD and select the 'Advanced' option to perform the installation.
- Make sure to back up all important data on an external storage device since all the data will be deleted.

Before you start upgrading

Installation Options

Upgrade Installation using ESD

Upgrade Installation using the Installation DVD

Clean Installation using the Installation DVD

User Settings

Checklist after Completing the Installation

3. Installing Windows 8

- Upgrade Installation using ESD (Electronics Software Download)

Upgrade Installation using ESD (Electronics Software Download)

◆ Upgrade via ESD (Electronics Software Download)

ESD (Electronic Software Download) performs the installation without using the 'Windows 8 Installation DVD'. However, it performs the Windows 8 setup by downloading the installation image from the Microsoft Upgrade website from the following link. Register your purchase information and perform the corresponding procedures by following the instructions in the Upgrade Program published on the webpage.

- <http://windowsupgradeoffer.com>
- If the webpage is not displayed properly, install Silverlight.
 - Installation Link: <http://go.microsoft.com/fwlink/?linkid=149156>
- Connect to the network to download your file from the web page. Ask for assistance from the Microsoft home page or customer center about how to download and install the image file.
- The actual on-screen instructions and messages during the installation may differ from the user guide.

Before you start upgrading

Installation Options

Upgrade
Installation using
ESD

Upgrade
Installation using
the Installation
DVD

Clean Installation
using the
Installation DVD

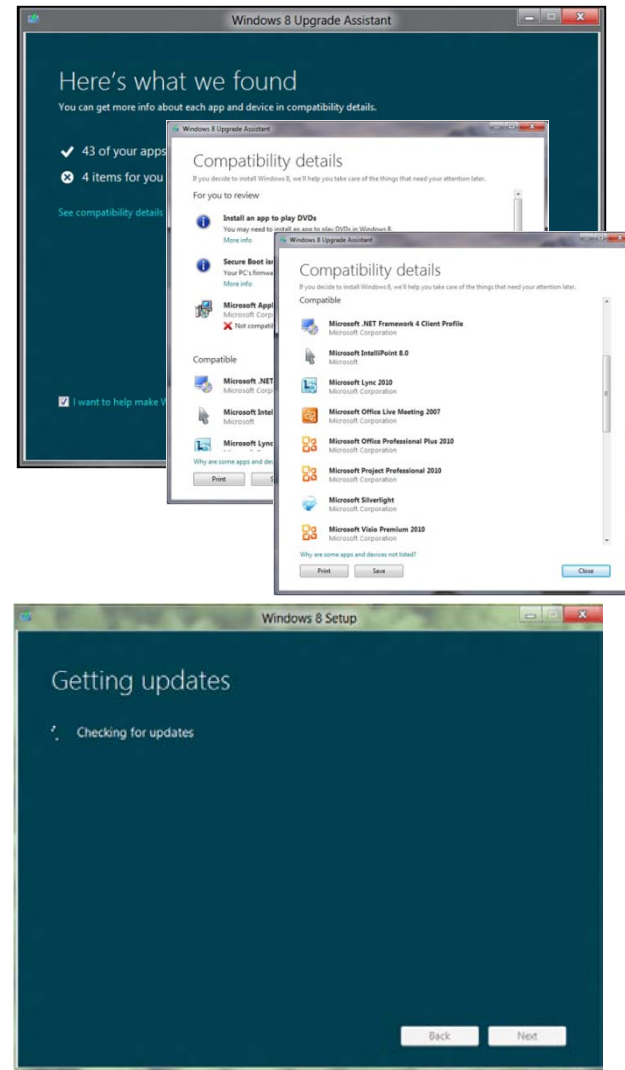
User Settings

Checklist after
Completing the
Installation

Upgrade Installation using ESD (Electronics Software Download)

If you operate the program, the upgrade program is downloaded and activated. The network connection must be active after downloading the upgrade assistant program.

- For programs running on Windows 7, the inspection results for items that you need to pay attention to, compatible items, and incompatible items in the Windows 8 environment are displayed.
 - You can check the detailed items using the 'See compatibility details'.
- Download the most recent update.
- **Make sure to perform this process since it is a process to install important updates required to install and use Windows 8.**



Before you start upgrading

Installation Options

Upgrade Installation using ESD

Upgrade Installation using the Installation DVD

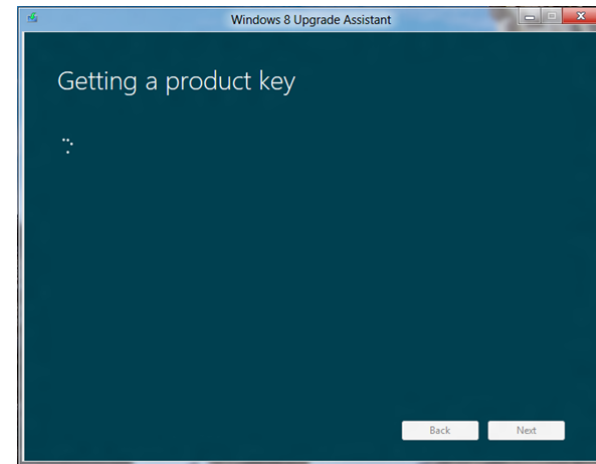
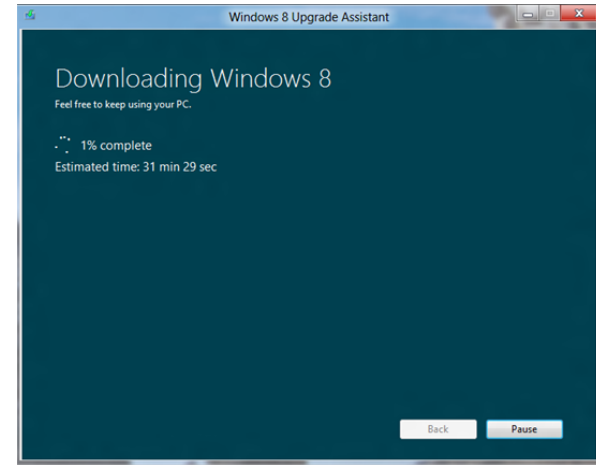
Clean Installation using the Installation DVD

User Settings

Checklist after Completing the Installation

Upgrade Installation using ESD (Electronics Software Download)

- Prepare for downloading the corresponding OS. This is a process to download related information.
- The product key automatically appears on the screen. Press 'Next' to start downloading Windows 8.



Before you start upgrading

Installation Options

Upgrade Installation using ESD

Upgrade Installation using the Installation DVD

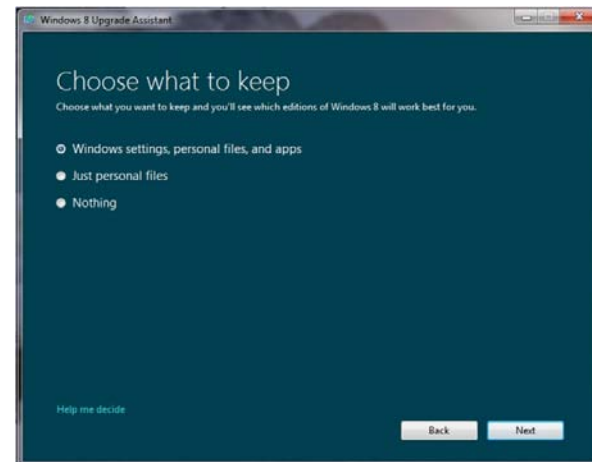
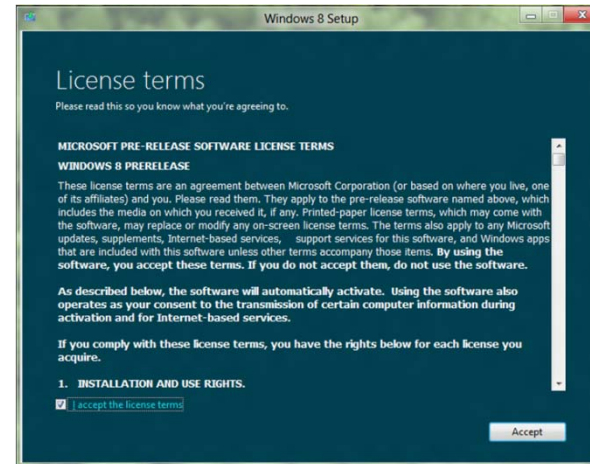
Clean Installation using the Installation DVD

User Settings

Checklist after Completing the Installation

Upgrade Installation using ESD (Electronics Software Download)

- Read and accept the license agreement.
- Select an installation option. The 'Windows settings, personal files and apps' option is available only if you install the same language version and the same 32 bit or 64 bit version. (For detailed information about the different installation options, refer to the "Installation Options" page.)



Before you start upgrading

Installation Options

Upgrade Installation using ESD

Upgrade Installation using the Installation DVD

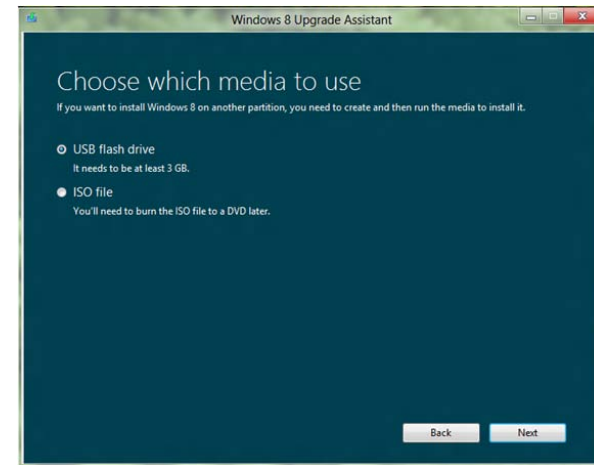
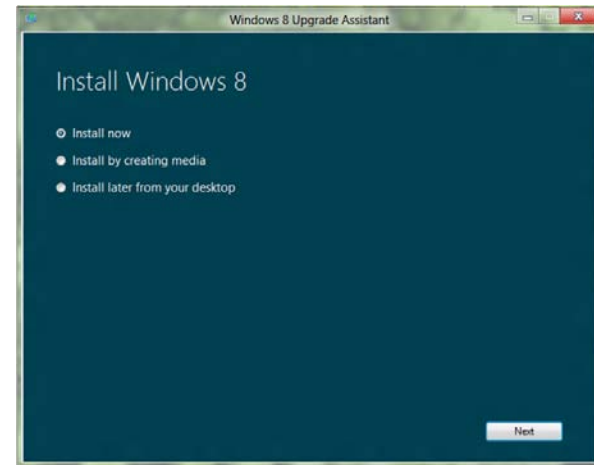
Clean Installation using the Installation DVD

User Settings

Checklist after Completing the Installation

Upgrade Installation using ESD (Electronics Software Download)

- Select an option to install Windows 8.
 - ‘Install now’ Performs the setup process immediately.
 - ‘Install by creating media’ Saves the Windows 8 image to a USB storage device or DVD to install it later.
 - ‘Install later from your desktop’ Closes the current window and stops the setup process.



Before you start upgrading

Installation Options

Upgrade Installation using ESD

Upgrade Installation using the Installation DVD

Clean Installation using the Installation DVD

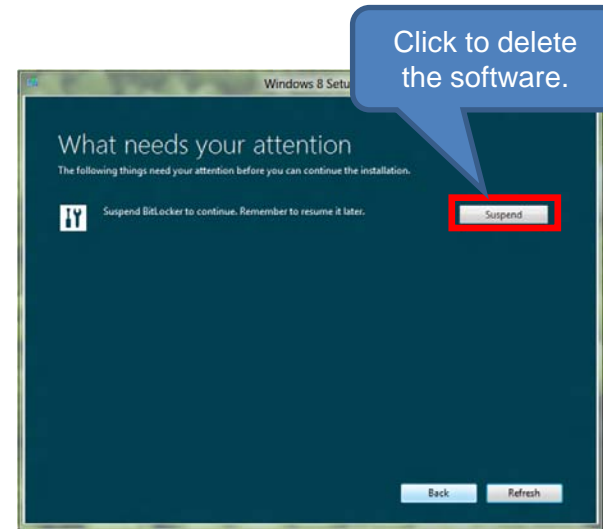
User Settings

Checklist after Completing the Installation

✳ This user guide provides instructions for the ‘Install now’ option only.

Upgrade Installation using ESD (Electronics Software Download)

- If the [\[Windows settings, personal files and apps\]](#) option is selected, the system checks for incompatible drivers and apps.
- Samsung Software to be deleted before upgrading
- After installing Windows 8 , download the software and drivers for Windows 8 from <http://www.samsung.com/ae/support/download/supportDownloadMain.do>.



Before you start upgrading

Installation Options

Upgrade Installation using ESD

Upgrade Installation using the Installation DVD

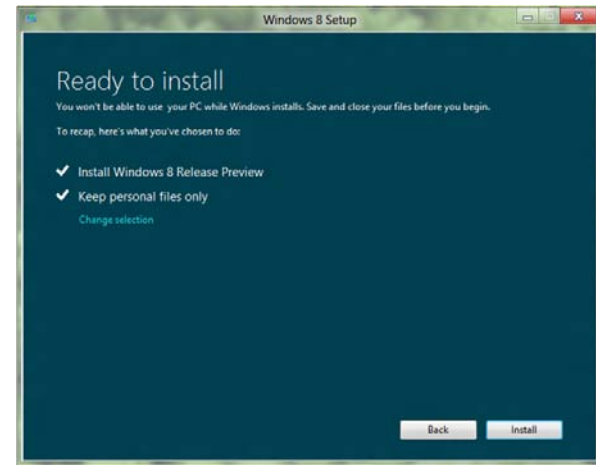
Clean Installation using the Installation DVD

User Settings

Checklist after Completing the Installation

Upgrade Installation using ESD (Electronics Software Download)

- Confirm your selection and press 'Install' to start the upgrade.
- The system automatically restarts several times during the Windows 8 setup process.
 - Please do not perform any other tasks and wait until the installation is completed.
 - When the 'Press any key to boot from the CD or DVD' message appears, do not press any key. If you press a key, the Windows 8 setup process starts again from the start.



Before you start upgrading

Installation Options

Upgrade Installation using ESD

Upgrade Installation using the Installation DVD

Clean Installation using the Installation DVD

User Settings

Checklist after Completing the Installation

4. Installing Windows 8

- Upgrading Installation using the Installation DVD

Upgrade Installation using the Installation DVD

◆ Upgrade Installation using the Windows 8 Installation DVD

Install Windows 8 using the DVD purchased from the Microsoft Upgrade website.

- You can choose an installation option from: Keep Windows settings, personal files and apps, Keep personal files only, or Nothing.
([For detailed information about the different installation options, refer to the "Installation Options" page.](#))

Before you start upgrading

Installation Options

Upgrade Installation using ESD

Upgrade Installation using the Installation DVD

Clean Installation using the Installation DVD

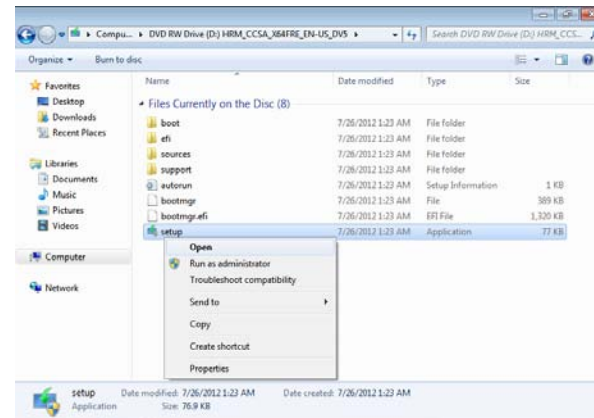
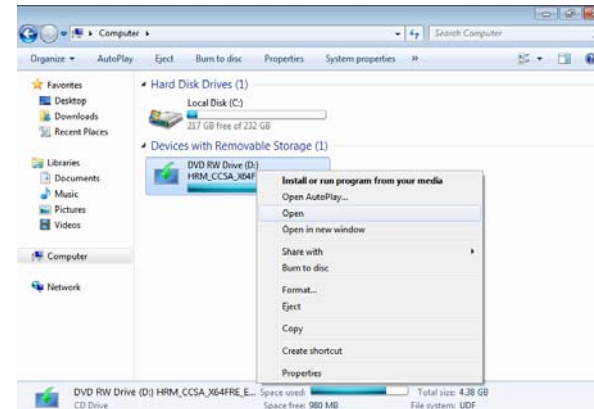
User Settings

Checklist after Completing the Installation

Upgrade Installation using the Installation DVD

◆ Starting Windows 8 Setup

- Insert the installation DVD into the DVD drive of your PC.
- The 'Setup.exe' file is automatically launched when you insert the DVD.
- If Setup does not automatically run, select the DVD drive as shown in the right picture and double-click it to run the 'Setup.exe' file.



Before you start upgrading

Installation Options

Upgrade Installation using ESD

Upgrade Installation using the Installation DVD

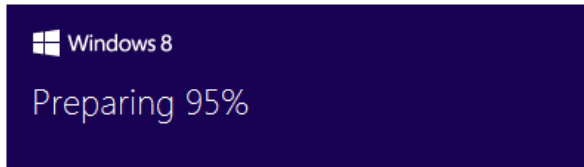
Clean Installation using the Installation DVD

User Settings

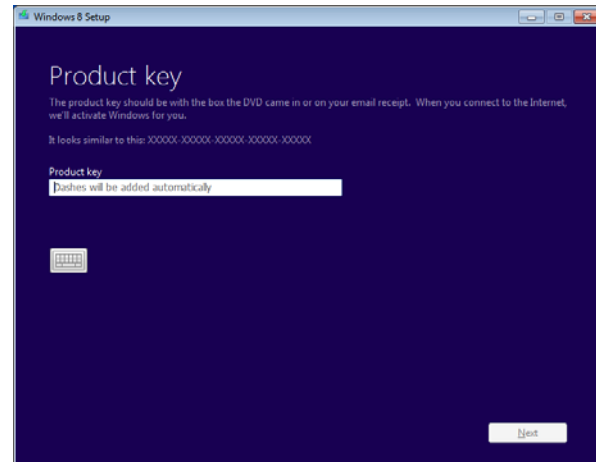
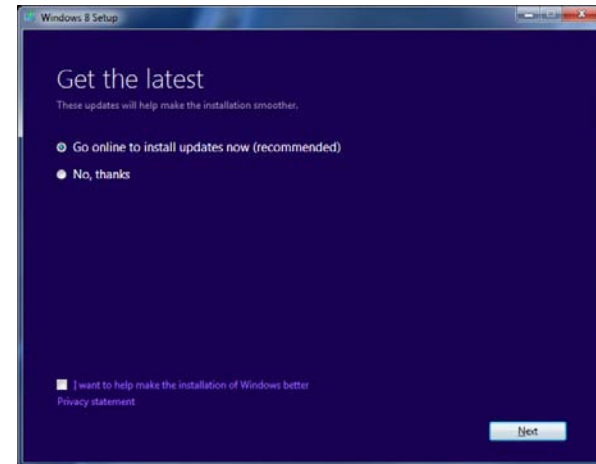
Checklist after Completing the Installation

Upgrade Installation using the Installation DVD

- Windows 8 Setup is being loaded.



- When done, press 'Next' to download the most recent update.
- Make sure to perform this process since this process installs important updates required to install and use Windows 8.
- Enter the product key included in the DVD package.



Before you start upgrading

Installation Options

Upgrade Installation using ESD

Upgrade Installation using the Installation DVD

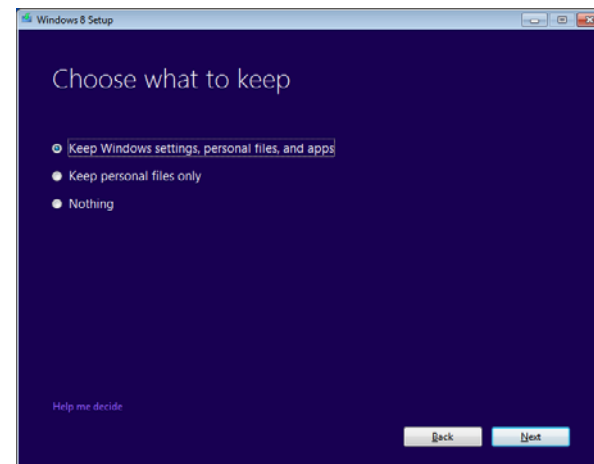
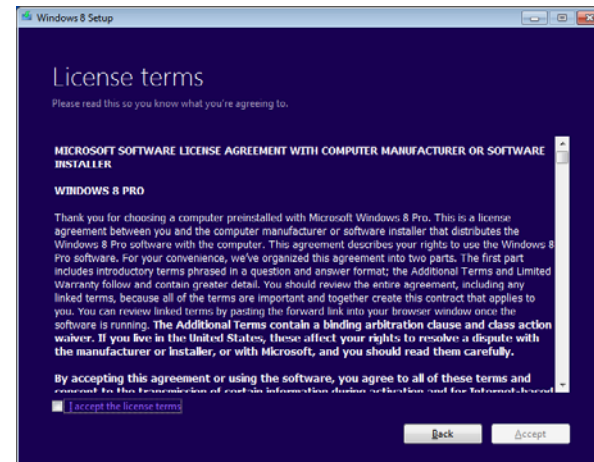
Clean Installation using the Installation DVD

User Settings

Checklist after Completing the Installation

Upgrade Installation using the Installation DVD

- Read through the license agreement and check 'I accept the license terms'.
- Select an installation option. The 'Keep Windows settings, personal files and apps' option is only provided when installing in the same language version and the same 32 bit or 64 bit version. (For detailed information about the different installation options, refer to the "Installation Options" page.)



Before you start upgrading

Installation Options

Upgrade Installation using ESD

Upgrade Installation using the Installation DVD

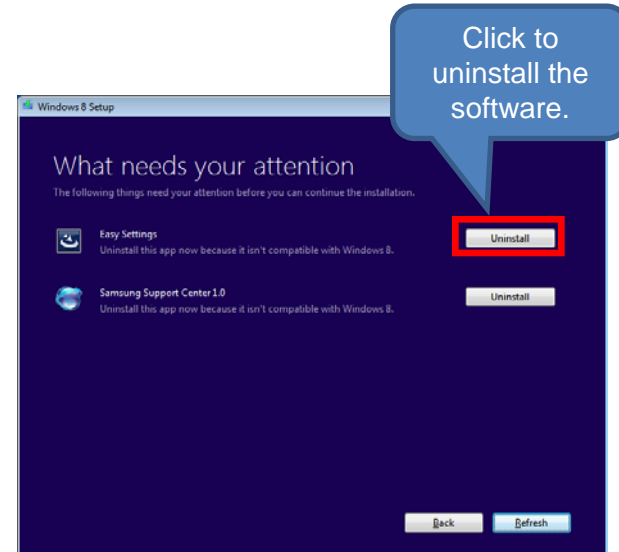
Clean Installation using the Installation DVD

User Settings

Checklist after Completing the Installation

Upgrade Installation using the Installation DVD

- If the [\[Keep Windows settings, personal files and apps\]](#) option is selected, the system checks for incompatible drivers and apps.
- Samsung software to be uninstalled before upgrading
- After installing Windows 8 , download and install the software and drivers for Windows 8 from <http://www.samsung.com/ae/support/download/supportDownloadMain.do>.



Before you start upgrading

Installation Options

Upgrade Installation using ESD

Upgrade Installation using the Installation DVD

Clean Installation using the Installation DVD

User Settings

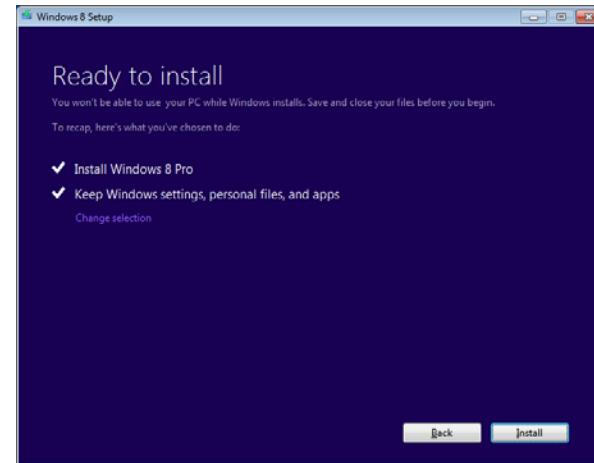
Checklist after Completing the Installation

Upgrade Installation using the Installation DVD

- Confirm your selection and press 'Install' to start the upgrade.
- The system will reboot several times.

Please do not perform any other tasks and wait until the Windows 8 setup is completed.

 - When the 'Press any key to boot from the CD or DVD' message appears, do not press a key. If you press a key, the Windows 8 setup process starts again from the start.



Before you start upgrading

Installation Options

Upgrade Installation using ESD

Upgrade Installation using the Installation DVD

Clean Installation using the Installation DVD

User Settings

Checklist after Completing the Installation

5. Installing Windows 8

- Clean Installation using the Installation DVD

Clean Installation using the Installation DVD

◆ Perform a clean installation by booting up with the Windows 8 Installation DVD

Boot up your system with the DVD purchased on the Microsoft Upgrade website to install Windows 8. All applications and files are deleted.

- Make sure to back up your important data to an external storage device since all data will be deleted.
- Some of the files used in the previous Windows version are saved in the Windows.old folder.
- data such as personal files, Program Files, Windows, etc.

Before you start upgrading

Installation Options

Upgrade Installation using ESD

Upgrade Installation using the Installation DVD

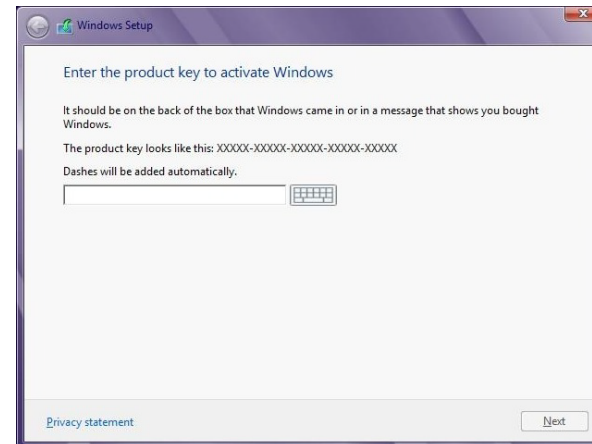
Clean Installation using the Installation DVD

User Settings

Checklist after Completing the Installation

Clean Installation using the Installation DVD

- Insert the Windows 8 installation DVD to boot up your system.
- When the 'Press any key to boot from the CD or DVD' message appears on the screen, press any key to continue the Windows 8 installation. If no message appears on the screen, refer to the "If the installation DVD cannot boot up the system" message on the following page.
- Confirm the language, the time and currency format, and the Keyboard or input method before clicking 'Next'.
- Enter the product key included in the DVD package.



Before you start upgrading

Installation Options

Upgrade Installation using ESD

Upgrade Installation using the Installation DVD

Clean Installation using the Installation DVD

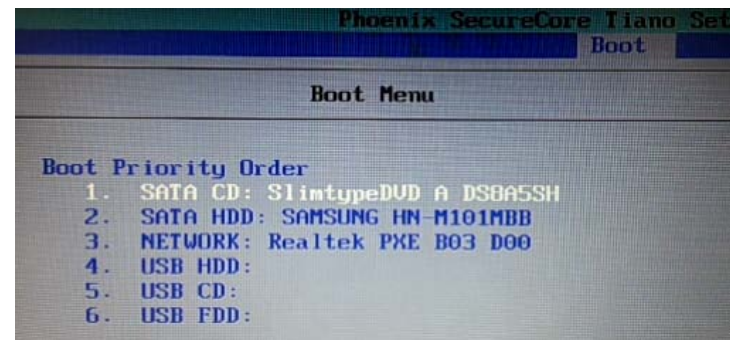
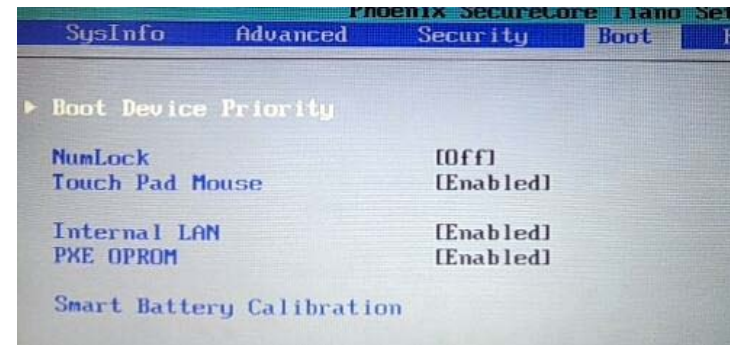
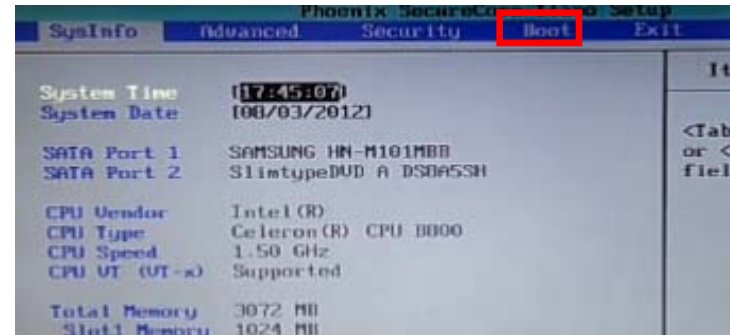
User Settings

Checklist after Completing the Installation

Clean Installation using the Installation DVD

※ **Note:** If the installation DVD cannot boot up the system

- Insert the Windows 8 Installation DVD to boot up the system and press 'F2' to enter the BIOS screen.
- Use '→' to go to the 'Advanced' menu. Then set 'Fast BIOS Mode' to [Disabled]. Go to the 'Boot' menu and press 'Enter'.
- Go to the 'Boot Device Priority' menu and press 'Enter'.
- Change the boot priority to place the 'DVD'-included item at the top.
 - Use the 'F5' / 'F6' key to change the boot order.
- Press the 'F10' key to save the settings and press 'Enter' to boot up the system.



Before you start upgrading

Installation Options

Upgrade Installation using ESD

Upgrade Installation using the Installation DVD

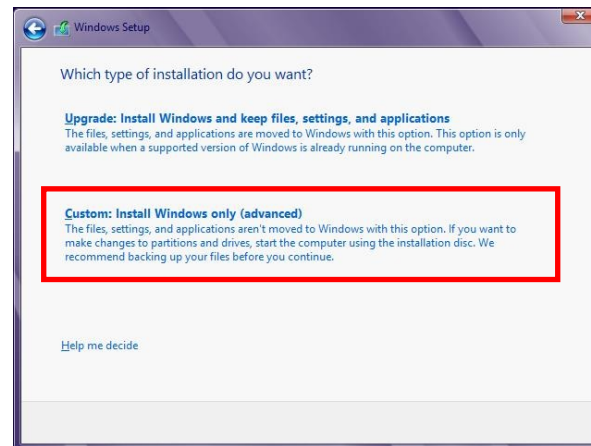
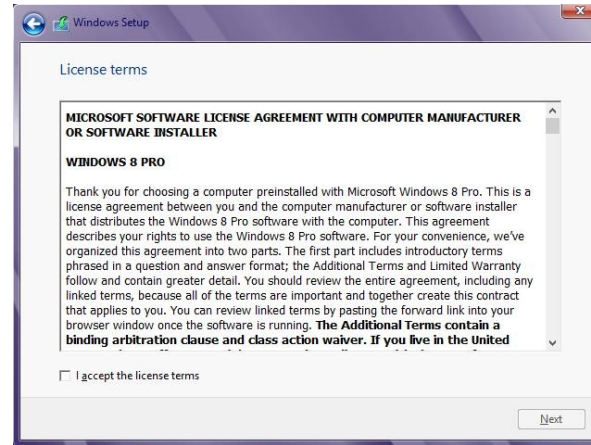
Clean Installation using the Installation DVD

User Settings

Checklist after Completing the Installation

Clean Installation using the Installation DVD

- After entering the product key, read through the license agreement and check 'I accept the license terms'.
- Select 'Custom: Install Windows only (advanced)'.
(The Upgrade option is not available.)



Before you start upgrading

Installation Options

Upgrade Installation using ESD

Upgrade Installation using the Installation DVD

Clean Installation using the Installation DVD

User Settings

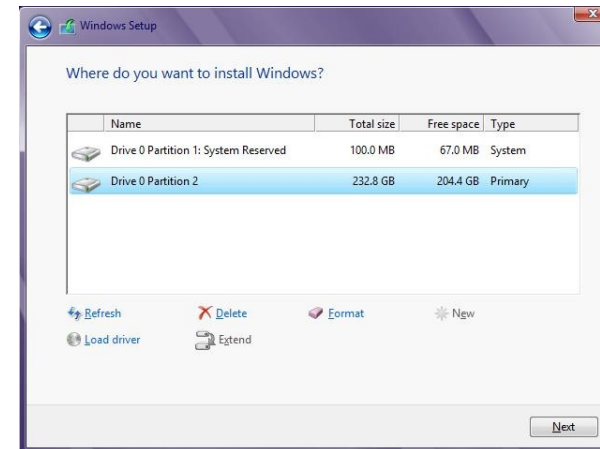
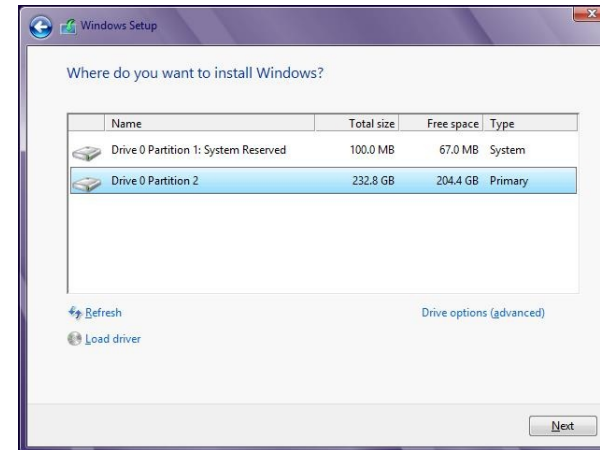
Checklist after Completing the Installation

Clean Installation using the Installation DVD

※ Make sure to back up all important data to an external storage device since all data will be deleted.

- Select where to install Windows 8.
 - [Method 1] Press 'Drive options (advanced)' then press 'Format'. Press 'Next' when format is complete.
 - [Method 2] To change the partition size, select and delete all partitions by pressing 'Delete' until only a single unallocated space exists. Press 'New' to configure primary partition. When primary partition configuration is complete, press 'Next' to continue with the installation.

※ Note: Changing the partition configuration will lose the capability to use the 'Samsung Recovery Solution' permanently.



Before you start upgrading

Installation Options

Upgrade Installation using ESD

Upgrade Installation using the Installation DVD

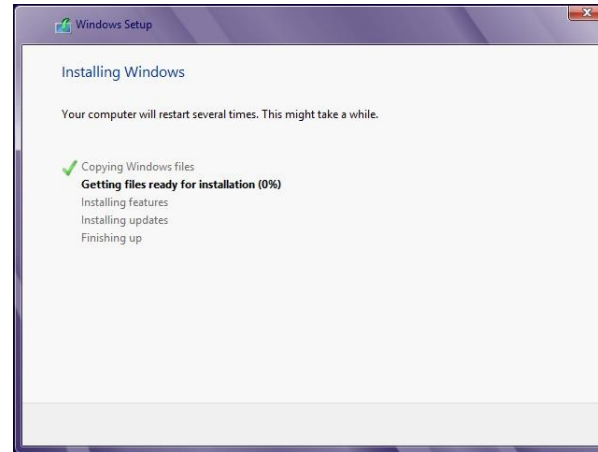
Clean Installation using the Installation DVD

User Settings

Checklist after Completing the Installation

Clean Installation using the Installation DVD

- The system will reboot several times.
Please wait until the Windows 8 setup is completed before performing any other tasks.
- When the 'Press any key to boot from the CD or DVD' message appears, do not press a key. If you press a key, the Windows 8 setup process starts again from the start.



Before you start upgrading

Installation Options

Upgrade
Installation using
ESD

Upgrade
Installation using
the Installation
DVD

Clean Installation
using the
Installation DVD

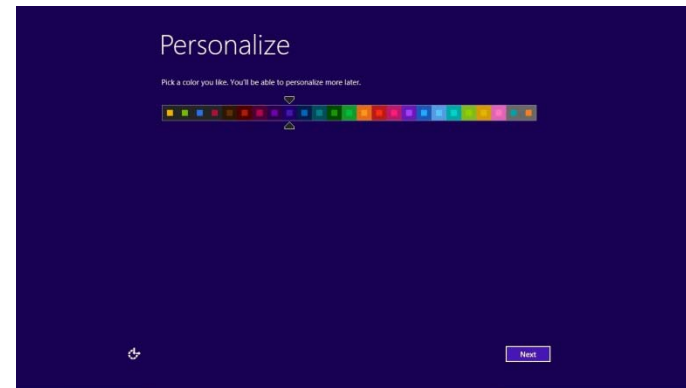
User Settings

Checklist after
Completing the
Installation

User Settings

◆ 1. Personalize

- Pick a color theme for your system.
- Enter your PC name.
- The input box for the PC name may not appear depending on your selected installation option.



Before you start upgrading

Installation Options

Upgrade
Installation using
ESD

Upgrade
Installation using
the Installation
DVD

Clean Installation
using the
Installation DVD

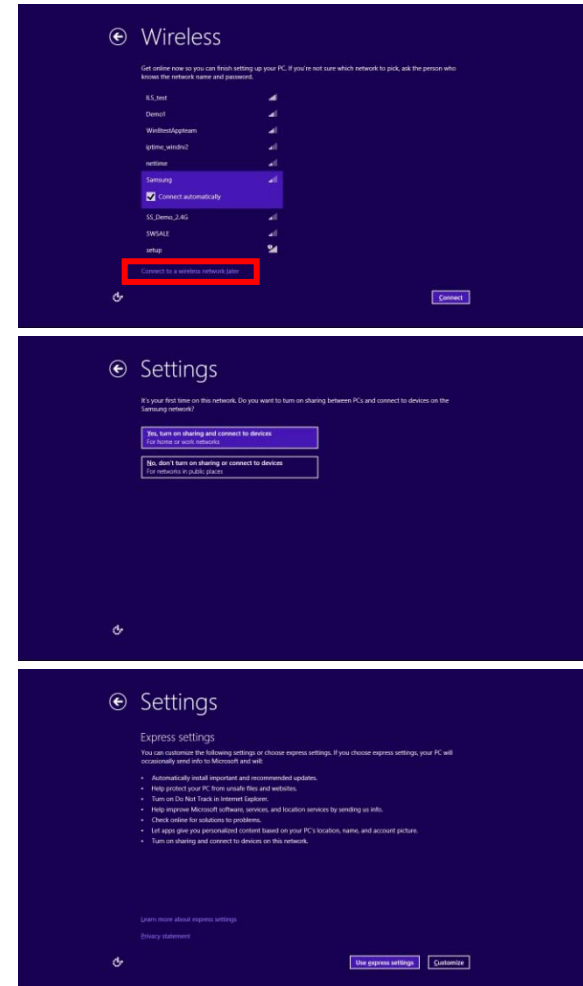
User Settings

Checklist after
Completing the
Installation

User Settings

◆ 2. Wireless

- Configure the wireless network for your system.
 - If you want to configure your wireless network after completing the installation, press '[Connect to a wireless network later](#)'.
- Select the network to connect to. Then set the password and security.
 - If you want to activate sharing between PCs, select 'Yes, turn on sharing and connect to devices'. Alternatively, if you want to deactivate sharing between PCs, select 'No, don't turn on sharing or connect to devices'.
- Configure critical basic features of Windows 8.
 - Press 'Use express settings'.
 - If you want to configure the settings in detail, press 'Customize'.



Before you start upgrading

Installation Options

Upgrade Installation using ESD

Upgrade Installation using the Installation DVD

Clean Installation using the Installation DVD

User Settings

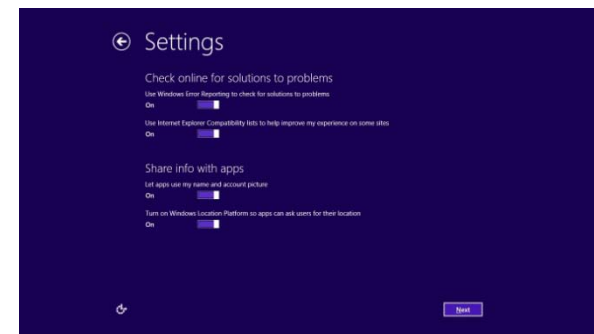
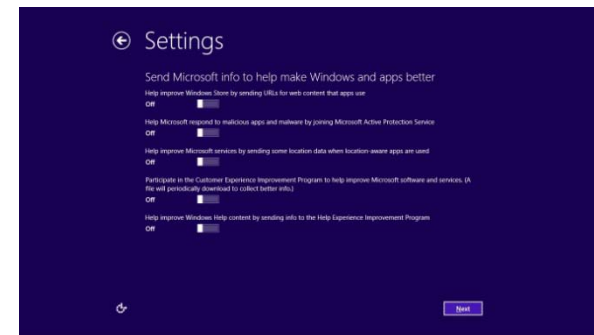
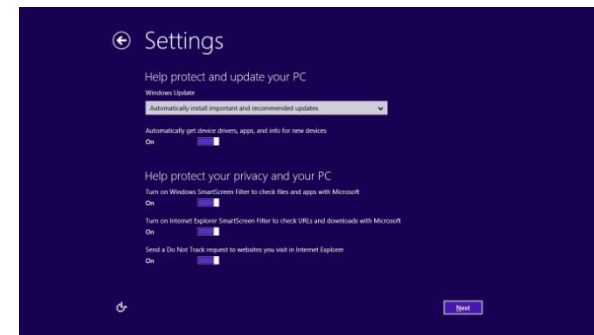
Checklist after Completing the Installation

User Settings

◆ 3. Custom Settings

- Detailed items in the custom settings are as following.

- Help protect and update your PC
- Help protect your privacy and your PC
- Send Microsoft info to help make Windows and apps better
- Check online for solutions to problems
- Share info with apps



Before you start upgrading

Installation Options

Upgrade Installation using ESD

Upgrade Installation using the Installation DVD

Clean Installation using the Installation DVD

User Settings

Checklist after Completing the Installation

User Settings

◆ 4. Sign in to Your PC

- The corresponding options may differ depending on the selected installation option.
- Select the account to sign in to your PC.
- You can create a Local account and a Microsoft account.
 - A local account is similar to the Windows 7 account. You can switch into a Microsoft account in the System Settings.
- A Microsoft account can be created after completing the installation.
 - If you sign in with Microsoft account
You can synchronize and use online content such as Windows Store, Mail, account pictures, browser history, etc.

Before you start upgrading

Installation Options

Upgrade
Installation using
ESD

Upgrade
Installation using
the Installation
DVD

Clean Installation
using the
Installation DVD

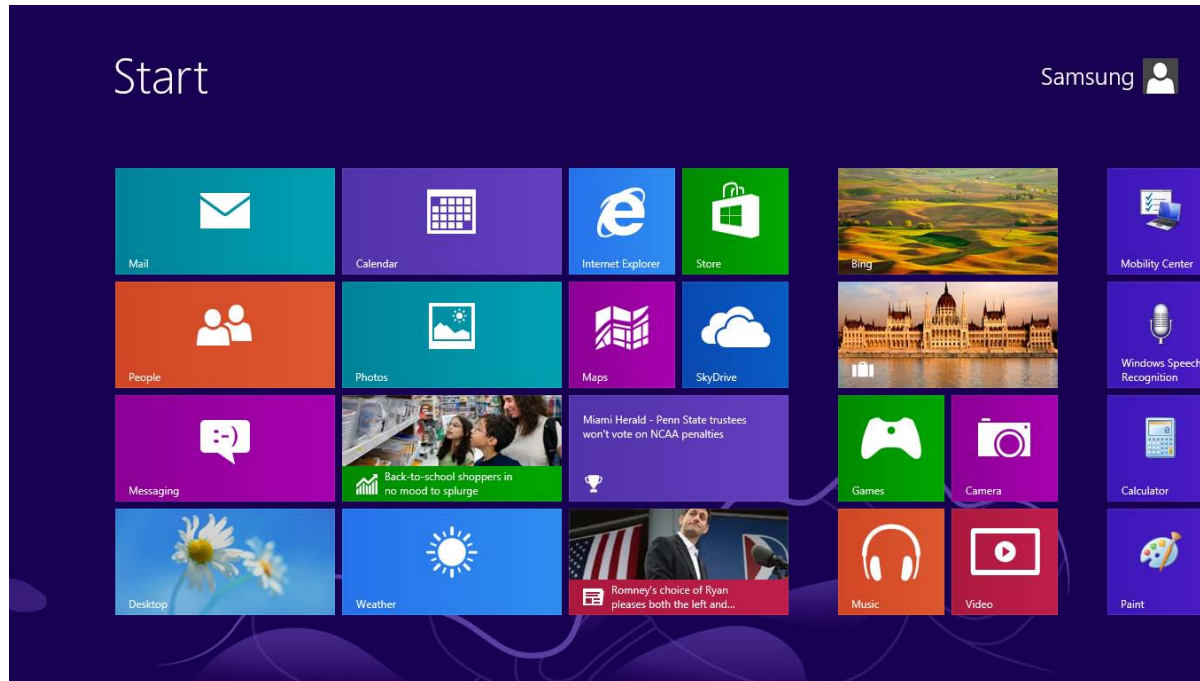
User Settings

Checklist after
Completing the
Installation

User Settings

◆ Installation Complete Screen

The installation is complete when all the settings are complete. The following Start screen appears.



Before you start upgrading

Installation Options

Upgrade Installation using ESD

Upgrade Installation using the Installation DVD

Clean Installation using the Installation DVD

User Settings

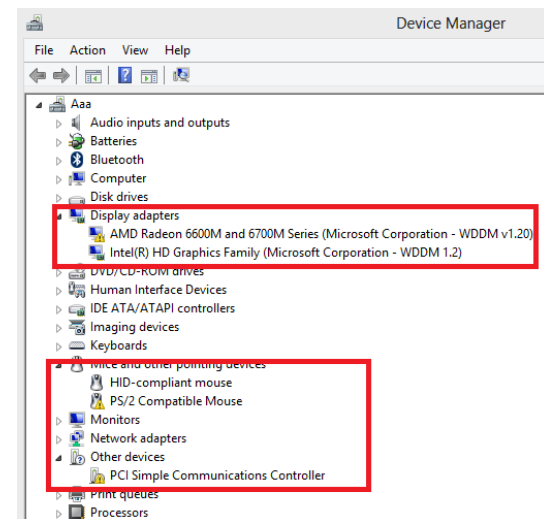
Checklist after Completing the Installation

7. Checklist after Completing the Installation

1. Windows 8 System Check

◆ Installing Windows 8 drivers and software

- If you need to install a Windows 8 device driver separately or if you want to install a program, that is compatible with Windows 8, go to <http://www.samsung.com/ae/support/download/supportDownloadMain.do> and download the 'SW Update' program.
- When activating the 'SW Update' program, the program searches for device drivers and software programs required for your system. Then you can select the required items to install.
- How to check for devices that require drivers to be installed for Windows 8
 - Press Windows Key + X → Activate Device Manager:
Search for items with a yellow exclamation icon



Before you start upgrading

Installation Options

Upgrade Installation using ESD

Upgrade Installation using the Installation DVD

Clean Installation using the Installation DVD

User Settings

Checklist after Completing the Installation

2. Windows 8 Upgrade FAQ

◆ Q: The system goes back to Windows 7 during the Upgrade process.

A: Please update the software for Windows 7 to the most recent software versions by downloading them from the Windows Update or Samsung Electronics download site. Then try again. If it fails again, change the Upgrade option to 'Keep personal files only' or 'Nothing'. Then try again. If all previous cases fails, try the 'Clean installation' option.

◆ Q: While operating Windows 8, the system stops and a blue screen appears.

A: <http://www.samsung.com/ae/support/download/supportDownloadMain.do>, run 'SW Update' and select the BIOS item to install.

◆ Q: “Stop Working” window appears while running a program when a software program is operating.

A: Uninstall the software and install the latest software version for Windows 8. For updates to preinstalled programs, run 'SW Update' to automatically update to the latest version.

Before you start upgrading

Installation Options

Upgrade Installation using ESD

Upgrade Installation using the Installation DVD

Clean Installation using the Installation DVD

User Settings

Checklist after Completing the Installation

Thank you