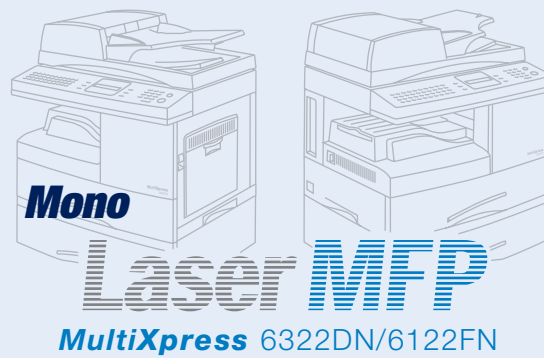




imagine a versatile laser MFP ready  
for any performance at any place

Samsung **MultiXpress** 6322DN/6122FN





imagine a versatile laser MFP ready for any performance at any place.

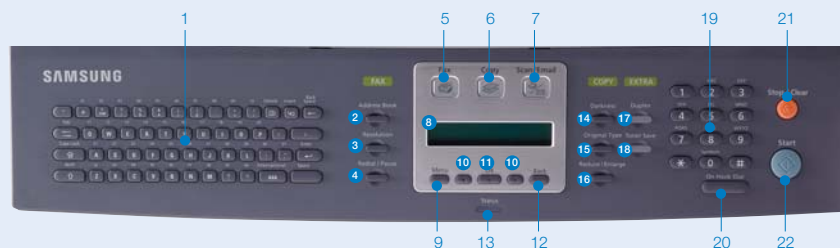
Durable life cycle, fastest print/copy speed in its class make the **MultiXpress** 6322DN/6122FN an attractive option. Economical maintenance, easy to use features and an operation panel that includes a built-in QWERTY keyboard for scan to email communication.

## Components



- 1. ADF (Automatic Document Feeder) 2. Document width Guides 3. Document Input Tray
- 4. Document Output Tray 5. Control Panel 6. Multi-Purpose Tray 7. Front Cover
- 8. Release Lever 9. Scanner Lid 10. Tray 1 11. Optional Tray 12. Output Support
- 13. Power Switch 14. Power Receptacle 15. Extension Telephone Socket (EXT)
- 16. Telephone Line Socket (LINE) 17. Parallel Port 18. USB Port 19. Network Port
- 20. ADF Connector

## Control Panel Components



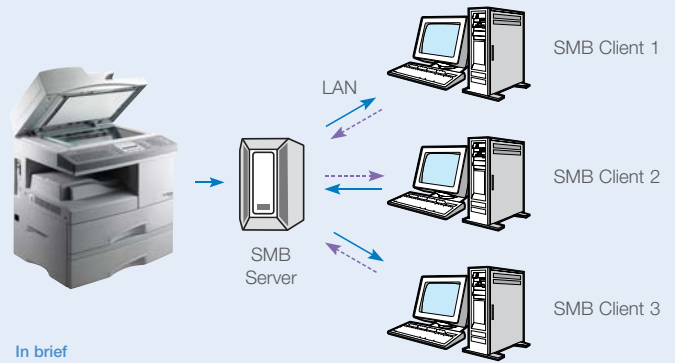
- 1. Keyboard 2. Address Book 3. Resolution 4. Redial/Pause 5. Fax 6. Copy 7. Scan/Email
- 8. Display 9. Menu 10. Scroll buttons 11. OK 12. Back 13. Status 14. Darkness
- 15. Original Type 16. Reduce/Enlarge 17. Duplex 18. Toner Save 19. Number keypad
- 20. On Hook Dial 21. Stop/Clear 22. Start

## Scan to SMB



With the Scan to SMB (Server Message Block) feature, users can store scanned documents directly to a shared folder in user's PC. Up to 20 destinations can be designated as a shared folder. Scan to SMB is more secure than Scan to FTP because password is encrypted and it allows transmission of larger documents than Scan to E-mail since there is no limitation of document size.

This is a very convenient and user-friendly feature for users because they do not need an additional client program but can set up to shared folders through embedded web server, SyncThru™ Web Service. This supports Microsoft Windows, TCP/IP and other network protocols.



### In brief

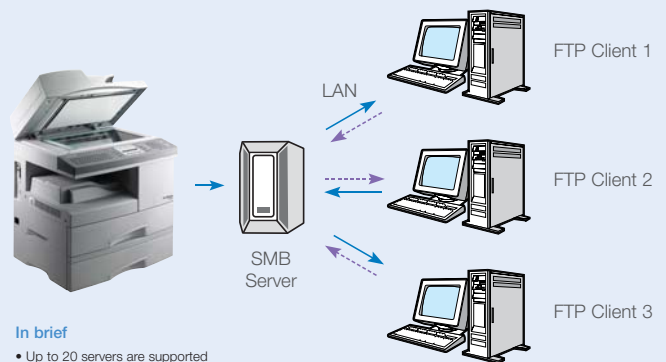
- Transmits large quantities of documents
- Transmits scanned documents directly to PC even without a server
- Ensures security because password is encrypted
- Up to 20 destinations are supported
- Easy configuration with SyncThru™ Web Service
- Choice of PDF, JPEG and TIFF files for added convenience
- Supported products: **MultiXpress** 5530FN, **MultiXpress** 6122FN, and **MultiXpress** 6322DN

## Scan to FTP



Scan to FTP is an efficient way to digitize and transmit large quantities of documents. Simply scan hardcopy documents, convert them to digital format, and store in a specified directory on the FTP server can be accessed from an FTP client program installed on the user's PC or a web browser conveniently.

Scan to FTP is designed especially for larger files and provides a strategic complement to Scan to E-mail. Scan to FTP can handle files of near limitless proportions, and is consequently the perfect tool for archiving larger documents. Scan to FTP is a very effective scan solution for transferring large size documents due to its dedicated functionality.



### In brief

- Up to 20 servers are supported
- Easy configuration with SyncThru™ Web Service
- Transmits large quantities of documents
- Fast transmission speed
- Easily shares large files on a server with multiple users
- Choice of PDF, JPEG and TIFF files for added convenience
- Supported products : **MultiXpress** 5530FN, **MultiXpress** 6122FN, and **MultiXpress** 6322DN

## SyncThru™ Web Service

Increase productivity with SyncThru™ Web Service. This user friendly printer configuration tool requires no installation in the form of embedded web server that can be accessed by web-browser. It provides administrators with the ability to change network and individual printer settings, upgrade firmware and view network printer status.



Remote Configuration and Monitoring of Network Printer



Use Popular Web Browser without Installing Extra Software



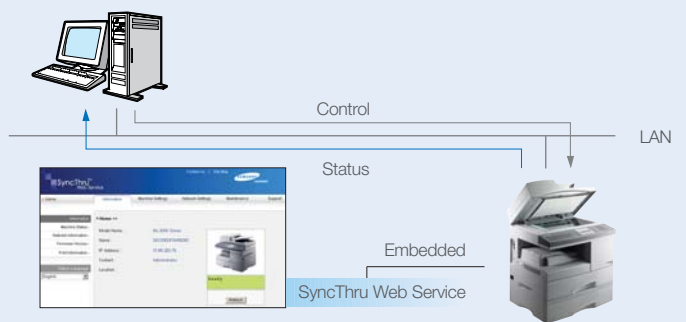
Modification Enabled by Authorized User (Password Protection)



Print Out Configuration Sheet of Network Printer



Firmware Upgrade of Printer and Network Card



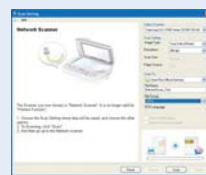
## Document Management Software

### SmarThru™Office



SmarThru Office

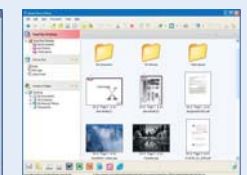
Samsung's SmarThru™Office is a powerful document management application for Office users. It creates, stores and edits scan images, and delivers them to each application. With new features the document management and editing features are greatly enhanced for easy and convenient use with Samsung MFP in offices with complicated networks and a variety of equipment. Also network scan is provided as default so that users do not have to install additional applications. Users will also appreciate the convenience of scanning documents directly to their PC by using SmarThru client. With Samsung SmarThruTMOOffice software, you will wonder how you ever managed your documents without it.



Network scan view



Local scan view



SmarThru™Office Main Page

# imagine digital duplex copier

## Standard DADF (Duplex Automatic Document Feeder)

creates professional duplex (2-sided) documents in 4 copy formats including 1:1, 1:2, 2:1, 2:2 with simple one-touch buttons, saving on paper or additional equipment costs. (*MultiXpress 6322DN only*)

## 22 pages (A4)/min.

The fastest copy speed in its class will make short work of your volume documents.

## Special Copy Editing

The high-tech digital core of the *MultiXpress 6322DN/6122FN* adds a finishing touch to your document creation with various editing functions like Clone, Auto-fit, 2-up, Poster and ID Card copy in addition to other essentials like 25%~400% Zoom-copy or a 999 page Multi-copy.

## Auto Margin Shift & Book Copy

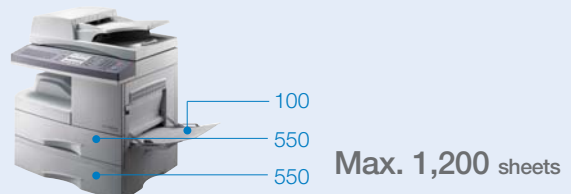
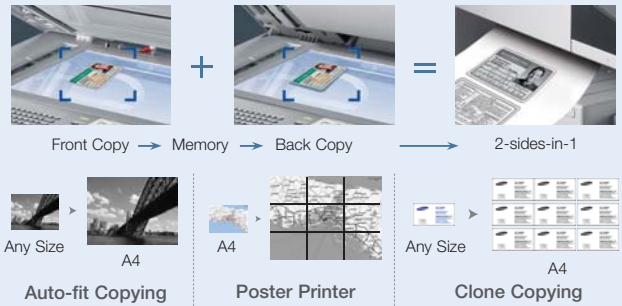
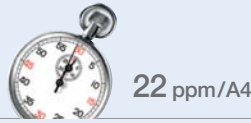
Create a binding edge for the document by shifting the image horizontally or vertically. Then copy an entire book by using Book Copy options like Left Page, Right Page or Both Pages.

## High Volume Paper Capacity

the standard 550-sheet paper tray, 100-sheet multi purpose tray and optional 550-sheet additional tray, mean you can copy more with less reloading, saving you time and effort.

## Easy Operation

The intuitively designed operation panel has ergonomic one-touch buttons, a clear LCD display and an Error Indicator for instant job status checking and more direct control.



# imagine high quality laser printer

## Printouts

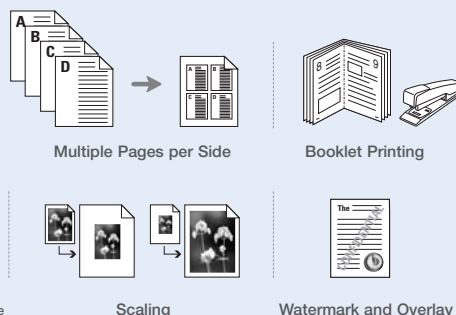
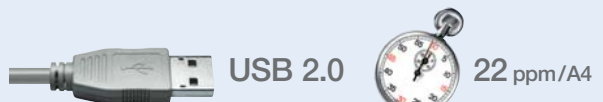
The superb output of up to 1,200 dpi will sharpen up your appearance as well with outstanding image quality.

## 22 pages/min. (A4)

With a fast printout speed and a high speed USB 2.0 interface you'll never have to wait long.

## Professional Layouts

Printing in various layouts from the menu tab like Multiple Pages per Side, Scaling, Fit to Page, Poster, Duplex Printing, Booklet Printing, Watermark and Overlay will allow you to create with professional flair.



## Network Printing

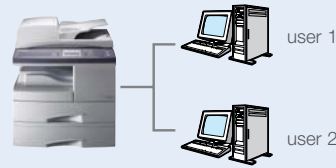
The advanced capabilities of the **MultiXpress** 6322DN/6122FN can be shared over a network with the built in network kit for easy printing management to meet the needs of a small workgroup.

## Toner Save Button for up to 30% Savings

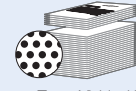
Just push the one-touch button to reduce toner consumption by up to 30% while still producing high quality printouts in a slightly lighter tone.

## Economic 2-piece Consumables

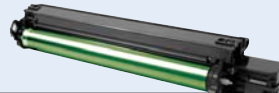
Allows you to maximize the use of the 20,000 page yield drum unit by replacing the 8,000 page yield toner cartridge separately, thereby extending the drum's usability.



Standard Toner Yield  
8,000 sheets



Toner Yield with  
One-touch save function  
8,000 sheets + 2,400 sheets



Drum Unit - 20,000 pages yield



Toner Cartridge - 8,000 pages yield

# imagine smart scanner

## Scan to E-mail



Samsung's powerful Scan to E-mail solution lets you e-mail documents to anyone in the world directly from your network connected multi function printers.

## A powerful productivity tool

Samsung's Scan to E-mail solution is a powerful productivity tool for any small to medium sized enterprise or workgroup within a larger organization. For example, members of a Mergers and Acquisition Team might want to share sensitive hard copy reports or news articles with selected colleagues. All they have to do is scan the relevant pages using Samsung MFP, select the address, add a message subject on the full e-mail keypad, and send. Everyone gets the information they need and, unlike faxes, confidentiality is maintained from the moment it's sent to the moment it's received.

## New Scan Management with LDAP

Digital scanning solution is sending scanned document to various destinations such as e-mail, PC (network), SMB (Server Message Block) server, and FTP (File Transfer Protocol) server. Scan to E-mail provides address book function using LDAP server. The LDAP (Lightweight Directory Access Protocol) is a networking protocol for querying and modifying directory services running over TCP/IP. If the user company has adopted this, the most up-to-date e-mail address book will be always available. PDF, JPEG and TIFF file formats are supported for digital scanning and settings for SMB, FTP and LDAP server should be executed through SyncThru™ Web Service.

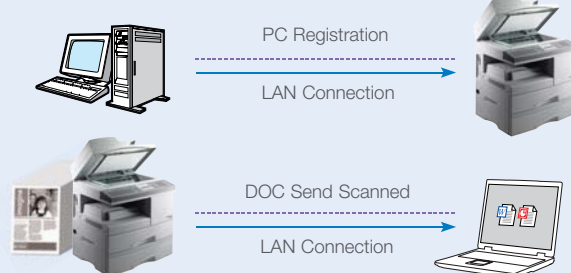
## Scan to Network

Samsung's advanced Scan to network solution gives you an easy way to capture and store information from hard copy documents. Featuring the same walk-up simplicity of our other scanning solutions, Scan to Network turns your Samsung network connected MFP into a powerful engine for capturing and sharing information. Now you can scan directly to your document management system.



1. Register e-mail address 2. Scan document 3. Send to multiple e-mail recipients

## Scan to Network



## In brief

- Scan directly to your networked PC with the client software installed
- Effortless scanning from the Samsung MFPs - SCX-4X20 series, **MultiXpress** 6X20 series, **MultiXpress** 5X30 series, **MultiXpress** 6X22 series or CLX-3160 Series to anywhere on your network
- Ideal for capturing and sharing information
- Integrates with document management systems
- Choice of PDF, JPEG and TIFF files for added convenience
- Supported products: \*SCX-4520/4720F/4720FN, \***MultiXpress** 6220/6320F, **MultiXpress** 5530FN/5330N, **MultiXpress** 6122FN/6322DN, CLX-3160FN/3160N
- \* Network card is required for these models.

# Specifications

## MultiXpress 6322DN

## MultiXpress 6122FN

<b>Print</b> Speed * Resolution First Print Out Time Emulation Duplex Print	Up to 22 ppm in A4 (23 ppm in Letter) Duplex Printing Speed : Up to 12.5 ipm in A4 (13 ipm in Letter) Up to 1200 dpi Effective Output Less than 12 seconds (from Standby mode) PCL6, PostScript 3 Standard
<b>Copy</b> Speed ** Resolution (Optical) First Copy Out Time Zoom Rate Multiple Copy Duplex Copy	Up to 22 cpm in A4 (23 cpm in Letter) 600 x 600 dpi Text, <b>Text/Photo mode</b> : 600 x 300 dpi <b>Photo mode</b> : 600 x 300 dpi (Platen), 600 x 600 dpi (DADF)   600 x 600 dpi Text, <b>Text/Photo mode</b> : 600 x 300 dpi <b>Photo mode</b> : 600 x 300 dpi (Platen), 600 x 600 dpi (ADF) 10 seconds 25~400% (platen), 25~100% (ADF) 1~999 pages Standard (1:2, 2:2)   Standard (1:2)
<b>Scan</b> Compatibility Method Resolution(Optical) Resolution(Enhanced) Scan to Effective Scan Length Effective Scan Width Color Bit depth B/W Bit depth Gray Scale	Twain standard, WIA standard Color CCD 600 x 600 dpi Max. 4,800 x 4,800 dpi Email, FTP, SMB, Client Platen : 356mm (14"), ADF : 356mm (14") 208 mm (8.2") <b>Internal</b> : 36 bit, <b>External</b> : 24 bit 1 bit for Text mode, 8 bit for Gray mode 256 Levels
<b>FAX</b> Compatibility Applicable line Modem Speed Transmission Speed *** Compression Mode Scan Speed **** Resolution Memory Auto Dial	ITU-T Group 3 Public Switched Telephone Network (PSTN) or behind PABX 33.6 Kbps Approx. 3 seconds per page MH / MR / MMR (ECM Mode) / JBIG / JPEG 2.5sec/A4 @ 203x98dpi, DADF(Scan Time) 3.2sec/A4 @ 203x98dpi, DADF(Multi Page Scan Time) <b>Standard</b> : 203 X 98dpi <b>Fine</b> : 203 X 196dpi <b>Super Fine</b> : 203 X 391dpi, 300 X 300dpi, 406 X 392dpi 8 MB (Approx. 640 pages at ITU-T #1 Chart) <b>1-touch dial</b> : 40 Locations <b>Speed dial</b> : 240 Locations (including 1-touch dial)
<b>Paper Handling</b> Input Capacity and Types Output Capacity and Types Media Size (for Print)  Media Size (for Fax and Copy) Media type ADF Capacity ADF Document Size	550-sheet Cassette Tray (75 g/m <sup>2</sup> , 20 lbs), 100-sheet MP Tray 250-sheet Face Down (75 g/m <sup>2</sup> , 20 lbs) <b>Main Tray</b> : A4, Letter, Legal, Folio, Oficio <b>MP Tray</b> : A4, Lettter, Legal, Folio, Executive, Envelope, #10,DL,C5,B5,Oficio, A5, C6 Env. Monach Env., A6, Custom(Min:76x127mm(3.00x5.00inch), <b>Max</b> : 216x356mm(8.50x14.00inch) for Fax : Letter, A4, Legal <b>Main Tray</b> : Plain Paper <b>MP Tray</b> : Plain Paper, Transparency, Envelope, Labels, Card stock, Thick, Thin, Cotton, Color, Pre-Printed, Recycled, Bond, Archive DADF 50 sheets ( 20lb, 75 g/m <sup>2</sup> ) ADF 40 sheets ( 20lb, 75 g/m <sup>2</sup> ) <b>Width</b> : 142~216mm (5.6"~8.5") <b>Length</b> : 128~356mm (5"~ 14.0") <b>Width</b> : 174~216mm (6.9"~8.5") <b>Length</b> : 128~356mm (5"~ 14.0") for Single page scan 128~400mm (5"~15.7") for Multi pages scan   for Single page scan 128~400mm (5"~15.7") for Multi pages scan
<b>General</b> Net Dimension (W x D x H) Weight with Consumables LCD System Memory Interface OS Compatibility *****  Warm-up Time Noise Level ***** Power Requirement Power Consumption Operating Conditions Duty Cycle, monthly	560 x 430 x 495 mm (22" x 16.9" x 19.4")   560 x 430 x 455 mm (22" x 16.9" x 18") 25.65Kg (56.5 lbs)   22.55 Kg (49.7 lbs) 2 line x 20 characters 64 MB USB 2.0 (High Speed), IEEE 1284, Ethernet 10/100 base Tx Windows Me/NT4.0/2000/XP(32/64bit)/Vista -Various Linux OS (via USB interface only) including Red Hat 8~9, Fedora Core 1~4, Mandrake 9.2~10.1, and SuSE 8.2~9.2 -Mac 10.3, 10.4, Windows Terminal Services Less than 25 seconds (from sleep mode) <b>Warm up</b> : Less than 48 dBA <b>Stand by</b> : Less than 40 dBA <b>Printing, Copying, Scan</b> : Less than 65 dBA 110~127VAC 50.60Hz, 6.0A or 220~240VAC, 50/60Hz, 3.5A <b>Sleep Mode</b> : 28 W <b>Standby Mode</b> : 100 W <b>Average</b> : 450 W <b>Temperature</b> : 10 °C ~ 32 °C (50 °F ~ 89 °F) <b>Humidity</b> : 20 % ~ 80 % RH Up to 20,000 pages
<b>Consumables</b> Type Yield ***** Code	2-piece Cartridge <b>Toner</b> : Average Cartridge Yield 8,000 standard pages. <b>Toner</b> : SCX-6320D8 <b>Drum</b> : SCX-6320R2
<b>Options</b> Network Others	Standard <b>Paper Cassette</b> : 1EA x 550-sheet Cassette Tray(SCX-S6122A) <b>Cabinet</b> : SCX-6320G5

\*Print speed will be affected by Operating system used, computing performance, application software, connecting method, media type, media size and job complexity

\*\*Copy Speed is based on Single Document Multiple Copy

\*\*\*Condition: Standard resolution, MMR(JBIG), Maximum modem speed, Phase"C" by ITU-T No.1 Chart, Memory Tx, ECM

\*\*\*\*Condition: ITU-T No.1 Chart, Standard Resolution

\*\*\*\*\*Please visit [www.samsungprinter.com](http://www.samsungprinter.com) to download the latest software version

\*\*\*\*\*Sound Pressure Level, ISO7779

\*\*\*\*\*Declared yield value in accordance with ISO/IEC 19752 Drum : 20,000 Pages

Distributed by

Design and Specifications are subject to change without notice.  
 Trademarks of other companies mentioned in these publications are hereby recognised and acknowledged.