

# Specifications

		ML-3470D	ML-3471ND
<b>Print</b>	Speed *	Up to 33 ppm in A4 (35 ppm in Letter)	
	First Print Out Time	Less than 8.5sec	
<b>Paper Handling</b>	Resolution	Up to 1,200 x 1,200 dpi effective output	
	Emulation	PostScript3, PCL6, SPL, IBM ProPrinter, EPSON	
	Duplex	Built-in	
	Input Capacity and Types	250-sheet Cassette @80g/m <sup>2</sup>	
<b>General</b>	Output Capacity and Types	150-sheets @80g/m <sup>2</sup> Face-Down	
	Media Size	76 x 127 mm (3" x 5") ~ 216 x 356 mm (8.5" x 14")	
<b>Paper Handling</b>	Special Media	Transparency, Envelope, Labels, Post Card, Card stock	
	Processor	Samsung 400 MHz	
<b>General</b>	Memory / Storage	32 MB (Max.288 MB)   64 MB (Max. 320 MB)	
	OS Compatibility	Windows 2000/XP(32/64bits)/Vista(32/64bits)/2003 Server(32/64bits) Various Linux OS: Red Hat 8~9, Fedora Core 1~4, Mandrake 9.2~10.1, SuSE 8.2~9.2 Mac OS 8.6~9.2, 10.1~10.4	
<b>General</b>	Interface	Hi-Speed USB 2.0, IEEE1284 Parallel   Hi-Speed USB 2.0, IEEE1284 Parallel, Ethernet 10/100 Base TX	
	Noise Level	Less than 52dBA (Printing), Less than 26dBA (Standby)	
	Duty Cycle, Monthly	80,000 sheets	
	Dimension (W x D x H)	400 x 433.4 x 285 mm (15.75" x 17.1" x 11.2 ")	
	Weight	11.1 kg (24.5 lbs)	

- Please visit [www.samsungprinter.com](http://www.samsungprinter.com) to download the latest software version.

\* Print speed will be affected by Operating system used, computing performance, application software, connecting method, media type, media size and job complexity.

\*\* Sound Pressure Level, ISO7779

# Supplies and Options

<b>Consumables</b>	Type	1-piece Cartridge
	Yield	Standard: Average Cartridge Yield 4K standard pages. High Yield: Average cartridge Yield 10K standard pages. Declared cartridge yield in accordance with ISO/IEC 19752.
	Model Code	ML-D3470A, ML-D3470B
<b>Options</b>		- 250-sheet Cassette Tray
		- Memory : 32 MB, 64 MB, 128 MB, 256MB



Toner Cartridge  
ML-D3470A, ML-D3470B



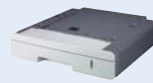
Memory  
ML-MEM110/120/130/140



Wireless Network  
ML-NWA10L



Toner Cartridge Package



Second Cassette  
ML-S3050A

\*\*\* Wireless network is only available in limited regions. Please contact your local Samsung Printer Representative or distributor for details.



imagine performance and reliability  
you can count on



The ML-3470 series laser printers combine high performance with fast speed and economical reliability to give you more output for less work. You will benefit from the low maintenance and high productivity, allowing you to get more done faster and easier while guaranteeing the right quality.

Samsung Mono Laser Printer ML-3470D/3471ND

Distributed by

Design and Specifications are subject to change without notice.  
Trademarks of other companies mentioned in these publications are hereby recognised and acknowledged.



# Mono Laser Printer

ML-3470D/3471ND



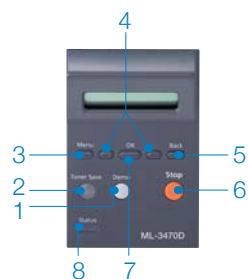
Samsung ML-3470D series is designed with your business in mind and intended to keep you working with less maintenance. It features the highest monthly duty cycle in its class, a large toner capacity with the toner save function, and a large paper capacity.

## Components



1. Output Tray
2. Control Panel
3. Front Cover
4. Multi-purpose Tray
5. Standard Tray
6. Optional Tray
7. Paper level Indicator
8. Network Port
9. USB Port
10. Parallel Port
11. Power Receptacle

## Control Panel Components



1. ML-3470D Demo
2. Toner Save
3. Menu
4. Scroll buttons
5. Back
6. Stop
7. OK
8. Status

imagine the benefits of high performance printing

## Max. Speed

Lasers are synonymous with speed and the Samsung ML-3470 series exceeds expectations. Increase reliability with the incredible printout speed of **33 ppm in A4(35 ppm in letter)**! And with the built-in duplex feature, you will accomplish twice as much in approximately half the time!

## Max. Monthly Duty Cycle

The ML-3470 series features high performance printers with huge monthly duty cycles up to **80,000 sheets**. Meeting the heavy printing requirements of a medium size office.

## Max. Output

Fast, productive output depends on processing speed and adequate memory. With a **400 MHz processor and 64 MB memory expandable to 320 MB**, this printer performs efficiently under a variety of circumstances.

## Max. Paper Input Capacity

You won't have to worry about running out of paper in the middle of a huge print job with the ML-3470 series. With a convenient **550 page paper capacity** composed of 250 sheets in the standard tray, an optional 250-sheet tray and 50 page multi-purpose tray, you'll save time when you really need it.

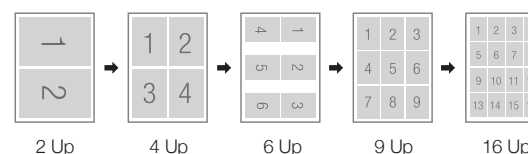


## Max. Printing Features

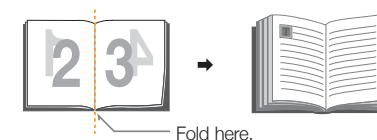
**Duplex Printing:** Enhance your efficiency with one-touch duplex feature that comes standard with the ML-3470 series. Create your own double-sided document with options such as long edge and short edge printing. In addition, two-sided printing will save paper, allowing for convenient storage and portability.



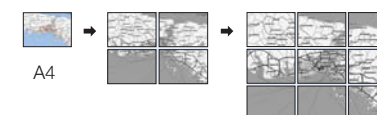
**N-up Printing:** Create multiple copies of the same page or photo onto one page. No need to cut and paste or print multiple times. N-up printing feature creates up to 16 images on one page and produces just the size you need.



**Booklet Printing:** The ML-3470 series can handle booklet creation easily and efficiently.



**Poster Printing:** Create large sized posters with the 'Poster' printing feature. Start with any size image and create proportional posters of any size. Print out is printed on many pages to create a seamless poster.



imagine economical advantages and efficient networking

## Efficient Economical Tools

Exclusive Samsung features make it easy to increase output while saving money. Just press the Toner Save Button and save up to 40% of toner while still producing quality printouts. The Duplex Button gives you quick two-sided copies, saving time and paper. And, with the high yield of toner cartridges, toner cartridges, which print up to 10,000 pages, you can print large documents and publications easily and economically.

## Max. Network Management Tools

### SyncThru™ Web Admin Service

SyncThru™ Web Admin Service is a web-based management tool for configuring printers, checking device status, performing remote diagnostics, receiving alerts when possible problems occur, and changing settings without leaving your desk.

Available on Samsung network printers and other SNMP\* compliant printers. \*SNMP (Simple Network Management Protocol) An application layer protocol that facilitates the exchange of management information between network devices. It is part of the Transmission Control Protocol/Internet Protocol (TCP/IP) protocol suite. SNMP enables network administrators to manage network performance, find and solve network problems, and plan for network growth.

### SyncThru™ Web Service

Increase productivity with SyncThru™ Web Service. This user-friendly printer configuration tool requires no installation in the form of embedded web server that can be accessed by web-browser. It provides administrators with the ability to change network and individual printer settings, upgrade firmware and view network printer status.

## Wired/Wireless Network Printing

ML-3470 series offers network printing capabilities to easily connect your workplace, including an Ethernet interface capable of being cabled directly into your network and providing high speed wireless network connectivity. Security features with advanced encryption (TKIP, CCMP-AES) and authentication (802.1x, WPA-PSK) are supported..

## Easy to Save Time at Work



- ML-3470 series is suitable for Small & Medium offices because of the Network management tools.
- ML-3470 series is suitable for a travel agency, bank, or school because of the Paper Capacity and high yield of toner cartridges.
- ML-3470 series is suitable anywhere because of the refined design