

SPECIFICATIONS

MultiXpress 6555N

Differences

PRINT	
Speed *	Simplex : Up to 53 ppm in A4 (55 ppm in Letter) / Duplex : Up to 48 ipm in A4 (50 ipm in Letter)
First Print Out Time	Less than 8 seconds (From Ready mode)
Resolution	1,200 x 1,200 dpi effective output
Emulation	PCL5e, PCL6, PostScript 3, TIFF, JPG, PDF v1.4
Duplex	Standard
COPY	
Speed **	Up to 53 cpm in A4 (55 cpm in Letter)
Resolution	600 x 600 dpi
First Copy Out Time	Less than 5 seconds
Zoom Rate	25 ~ 400% (platen), 25 ~ 200% (ADF)
Multy Copy	1 ~ 999
Duplex Copy	Built-in
Copy Features	ID Copy, Clone Copy, N-up Copy, Poster Copy, Booklet
SCAN	
Compatibility	Twain standard, WIA standard
Method	Color Flatbed Scanner or DADF
Resolution (Optical)	600 x 600 dpi
Resolution (Enhanced)	4,800 x 4,800 dpi
Scan to	HDD, USB, Email, Client, SMB, FTP
FAX	
Compatibility	ITU-T G3
Modem Speed	33.6 Kbps
Resolution	Mono : 300 x 300 dpi / Color : 200 x 200 dpi
Memory	HDD Store
Auto Dial	Speed dial : 200 Locations
Fax Feature	On hook Dial, Auto Redial, Last Number Redial, Mail Box, Auto Reduction, Multi-send, Delayed Send, Fax forwarding (HDD / Email / Fax)
PAPER HANDLING	
Input Capacity and Types	520-sheet Cassette, 100-sheet Multi-Purpose Tray
Output Capacity and Types	Up to 500-sheet Face Down
Media Size	6 x 127 mm (3" x 5") ~ 216 x 356 mm (8.5" x 14")
Media Type	Plain, Thin, Envelopes, Labels, Card Stock, Bond, Archive, Punched, Pre-Printed, Recycled, Transparency, Letterhead, Thick, Colored
ADF Capacity	100-sheet DADF
ADF Document Size	Width : 145 ~ 216mm (5.7"~8.5") / Length : 145 ~ 356mm (5.7" ~ 14.0") for Single page scan 145 ~ 400mm (5.7" ~ 15.7") for Multi pages scan
GENERAL	
LCD	800 x 480 7" WVGA Color Touch-Screen LCD
Memory / Storage	256MB (Max. 512MB) / 80GB HDD
OS Compatibility	Windows 2000 /XP (32/64bit) / 2003 Server (32/64bit) / Vista, Various Linux OS including Red Hat 8~9, Fedora Core 1~4, Mandrake 9.2~10.1 and SuSE 8.2~9.2 Mac OS 10.3~10.5, Windows Terminal Services
Interface	Hi-Speed USB 2.0, Ethernet 10/100/1000 base TX, USB host 2.0 (Scan to USB, USB print)
Noise Level	Less than 55 dBA (Printing) / Less than 57 dBA (Copying) / Less than 37 dBA (Standby)
Duty Cycle, Monthly	Up to 250,000 pages
Dimension (W x D x H)	641 x 494 x 607 mm (25.2" x 19.4" x 23.9")
Weight	48.2Kg (106.3lb)
SUPPLIES	
Yield ***	Toner : Average Cartridge Yield 25,000 standard pages. *** * Declared yield value in accordance with ISO/IEC 19752 Drum : 80,000 Pages
Type	2-piece Cartridge
Model Code	SCX-D6555A, SCX-R6555A
OPTIONS	
Options	256MB Memory : ML-MEM160 / Optional Cassette Feeder (x3) : SCX-S6555A / High Capacity Feeder : SCX-HCF100 / Fax Kit : SCX-FAX210 / Finisher : SCX-FIN11S / Staple Cartridge : SCX-STP000 / Stand Short Type : SCX-DSK10S / Stand Tall Type: SCX-DSK10T / FDI Kit : SCX-KIT20F / SmarThru Workflow V1.0 : SCX-KIT11S / JScribe S/W Enabler : SCX-KIT10J

* Print speed will be affected by Operating system used, computing performance, application software, connecting method, media type, media size and job complexity.

** Copy Speed is based on Single Document Multiple Copy.

*** Declared continuous cartridge yield value in accordance with ISO/IEC 19798.

Specifications are subject to change without notification.



imagine centralized workflow solution

Samsung **MultiXpress** 6555N



Why Samsung?

With all the copiers and multifunction printers on the market, why choose Samsung? Samsung is a world-renowned global company that regularly wins awards for reliability, design and innovative technology. It has the widest range of technologies and products, making it an expert in digital convergence. In the printing industry, Samsung is the fastest growing company, topping sales for many models.

Samsung has earned its reputation with award-winning excellence, based on performance, eco-friendliness and design innovation and for providing businesses with network and security solutions. Samsung products are reliable and deliver a high monthly duty cycle, keeping business productivity steady. In addition, they are reliable with low toner failure, and produce high quality color prints which are more durable and last a long time without fading.

Samsung also acquired global recognition and certification for being environmentally responsible, in terms of production, post-consumer recycling and creating pollution-free work environment.

RANK	COMPANY
1	Coca-Cola
2	Microsoft
3	IBM
5	NOKIA
21	SAMSUNG
25	SONY
36	Canon
56	xerox
88	STARBUCKS

Unit : US\$ bil.
Source : BusinessWeek / Interbrand

RANK	COMPANY	MarginGrowth 2001 - 2006 %	Stock Return 2001 - 2006 %
1	Apple	-	50.6
2	Google	-	-
3	TOYOTA	5.21	20.50
4	GE	1.36	1.11
5	Microsoft	-3.04	0.83
6	P&G	3.70	12.20
7	3M	5.49	7.77
8	Walt Disney	7.35	11.71
9	IBM	4.97	-3.48
10	SONY	1.14	-2.62
17	SAMSUNG	8.07	36.24

Source : Business Week May, 2007



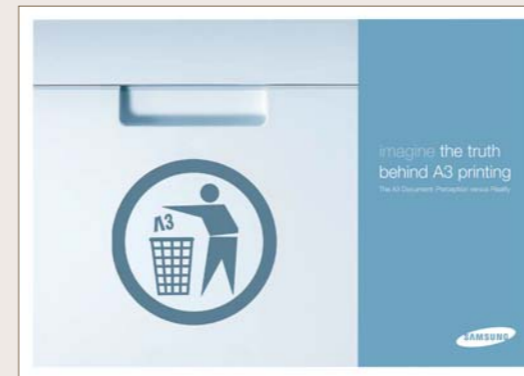
The World's Most Admired Company

4th Place Among Electronics Companies!

2006/2005		SCORE
1	1 General Electric	8.24
2	2 Siemens	7.19
3	11 Matsushita Electric Indl.	7.03
4	3 Samsung Electronics	6.79
5	4 Royal Philips Electronics	6.63
6	5 Sony	6.49
7	10 Hitachi	6.33

* Dates refer to year of survey

Why A4?



Most companies commonly think that A3 Digital Multifunction Printer is essential to their daily business operation. However, research* shows that out of 8,636 pages an average worker produces in a year, only 202 pages are A3 size – which is only 2.36% of the total printouts! The sophisticated scanning and printing function enable users to scale the document to fit the paper size available on the printer, which greatly reduce the needs for A3 printout, at the same

time saving half of the paper cost for each print! Just think, when was the last time you copied or printed on an A3 device.

* Source : UK Research Dec 2007

Why MultiXpress?

Samsung's latest A4 DMFP, the **MultiXpress** 6555N, has raised the industrial standard to a greater height. It outperforms others other DMFPs with many advanced functions and proven reliability.

The **MultiXpress** 6555N is the fastest A4 DMFP in the market today. Its proven reliability, high quality output and innovative features outshine other DMFP devices in its class! The embedded administrative and accounting solutions make **MultiXpress** 6555N the best choice for the business environment!



Imagine a high-speed, high-end A4 DMFP that could centralize your printing workflow. The **MultiXpress 6555N** delivers fast printouts, but with full multifunction features like duplex and copying. And it features Samsung's document management solutions like SmarThru and SyncThru. With this digital solution at the center of your business, you can eliminate your A3 DMFP and maximize your productivity. With Samsung **MultiXpress 6555N**, it's not that hard to imagine

Configuration



Main Unit (520 sheets + MP 100 sheets)



Option	1 Finisher + 1 SCF (Single Cassette Feeder) 520 sheets + HCF (High Capacity Feeder) 2.100 sheets	1 Finisher + Max. 3 SCF (Single Cassette Feeder) 520 sheets x 3 + Short Stand	1 Finisher + 1 SCF (Single Cassette Feeder) 520 sheets + Tall Stand

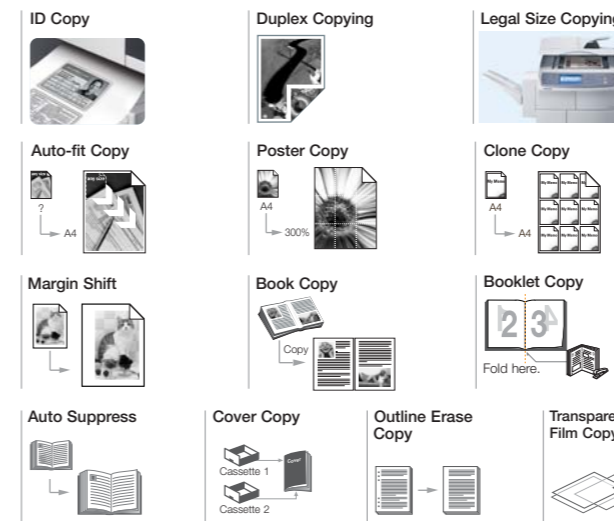
Imagine expanded productivity

Office space is also a big issue.

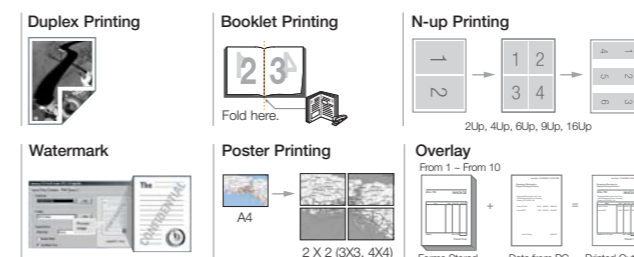
In general, A3 DMFP occupies more office space. Typically, the footprint of a mono A3 capable device is much larger than that of an A4 device, 70%* larger by volume on average. An A3 digital device takes up a lot of space with its console. But an A4 device only needs the corner of your desk or room.

The most productive A4 DMFP

- **Fast Copying**
The **MultiXpress 6555N** produces 53ppm in black and white. Moreover, the **MultiXpress 6555N** performs nearly all the copy functions that are generally operated on A3 DMFP.



- **Fast Printing**
Printing black-and-white document at 53 ppm (simplex) and 50ppm (duplex) your workloads can be completed efficiently. The numerous standard printing features help you to print document more easily and efficiently



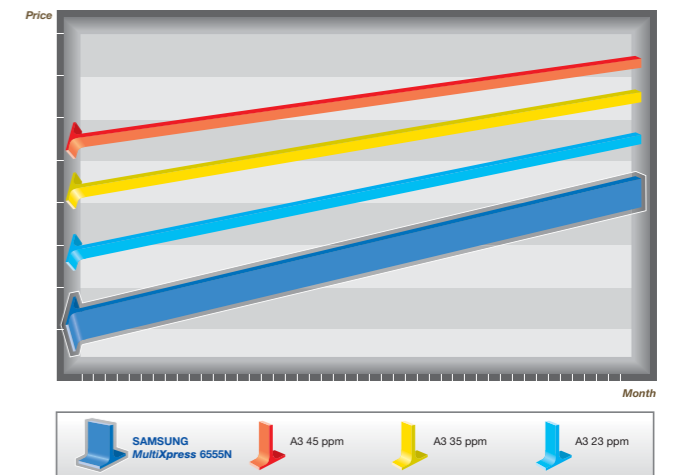
- **Vivid Color Scanner & Network Scanning**
The **MultiXpress 6555N**'s enhanced scanning resolution (4,800 x 4,800 dpi) and colour CCD method reproduce your document at its finest quality.

- **Fast Fax (Option)**
The optional fax kit offers speed dial up to 200 numbers, group dial up to 100 groups (up to 200 locations per group), duplex send and receive, fax-email and many other useful features. The duplex function enable the incoming fax be printed double-sided – save your printing cost!

The most effective business center!

- **TCO (Total Cost of Ownership)**
When compared to the TCO of general A3 office copiers the Samsung **MultiXpress 6555N**'s TCO can result in one of the lowest running costs in its class at an average of 10,000 prints per month [AMPV].

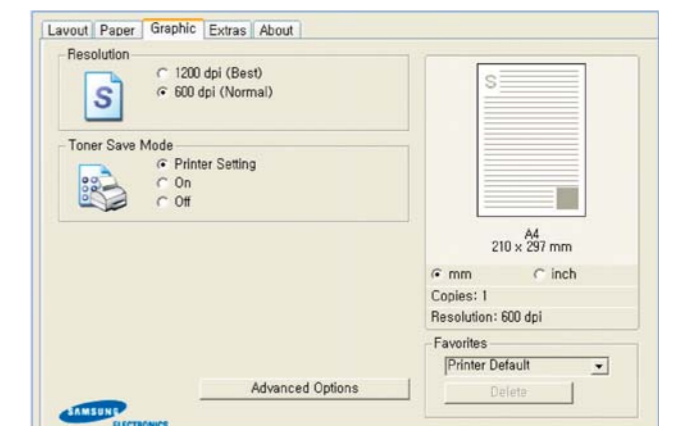
TCO Comparison by AMPV



- *Factor
 ① Set Price: based on the vendor's websites
 ② Consumable CPP ③ PM Parts CPP ④ Service Cost

- **Space**
MultiXpress 6555N's economical design takes up to 75% less space in your office than general A3 DMFPs so you have more room around you.

- **Toner and Energy**
With the embedded "Toner Save Mode" in the Printer driver, users can save toner by up to 25%. This is ideal for printing draft documents and reports without seeing a dramatic reduction in print quality.



The Most Reliable Multifunction Center

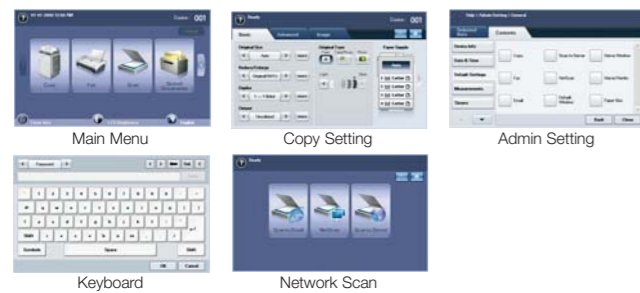
Maintains efficiency with Xpress reliability

Reliability is the word to describe **MultiXpress** 6555N. It offers all functions that business expect from a DMFP – the fastest printing, digital copying, scanning and faxing – at the same time increase business productivity with reliable performance, quality output and simple maintenance

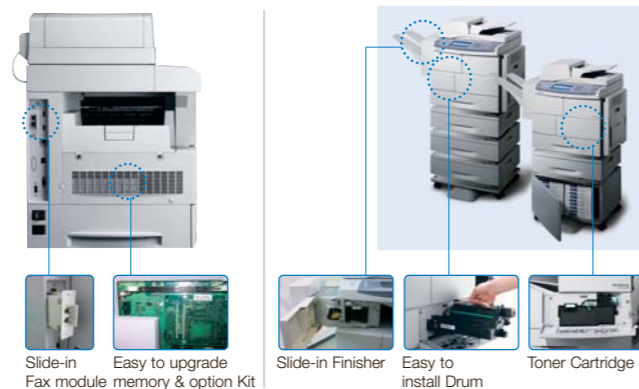
The most reliable performer!

Wide Touch Screen/UI Design

Samsung's exclusive 800 x 480 color wide LCD touch screen and 3-dimensional UI design is very intuitive and easy to use – no manual or training required!



Convenient Design



Paper Handling

Adding optional paper trays to store up to 3,240 sheets of paper at one time, reduce the frequency to refill paper.

Paper Jam

If and when a paper jam occurs the device indicates the problem area on the user display so you can simply, open the tray door to remove.

Modular system

The modular design make it easy to replace consumables, adding accessory and/or upgrade package. For example, finisher or memory can be easily slotted onto the main device.

Automatic Toner Ordering System (i-ATOS)

This innovative Automatic Toner Ordering System makes it really easy and convenient for you to order supplies for your MFP. It automatically alerts the designated supplier by email, and it provides a direct link to the supplier's homepage for a quick order.



The Professional Solution Center

Offers control with Xpress Customization

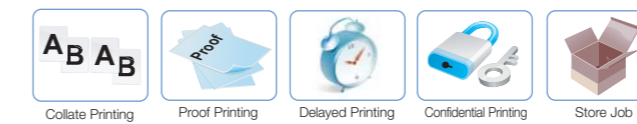
Powerful solution provides business professionalism to gain that winning edge. Samsung's **MultiXpress** provides high-speed printing and copying with customizable control to increase productivity and maintain economical running cost.

The most powerful solution center!

Expanded Printing

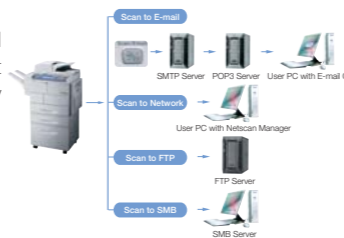
- Capabilities with Hard Disk Solution

: The standard 80GB HDD ensures smooth print traffic in a busy office and print environment.



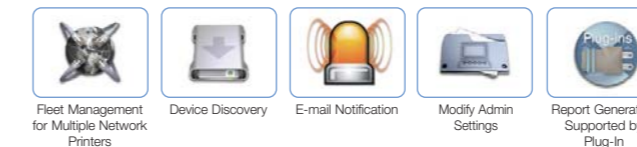
Scan to Anywhere

The **MultiXpress** 6555N helps to distribute document efficiently by scanning directly to email, FTP, SMB or client.



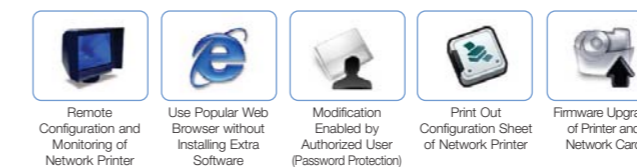
SyncThru™ Web Admin Service

SyncThru™ Web Admin service allows IT managers to easily manage and monitor all printers/MFPs on the network. The powerful feature permits job accounting, usage metering, authentication, storage management, remote driver installation and modification settings.



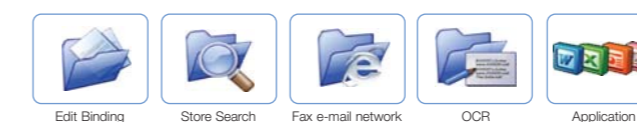
SyncThru™ Web Service

It provides administrators with the ability to change network and individual Printer settings, upgrade firmware and view network printer/MFP status.



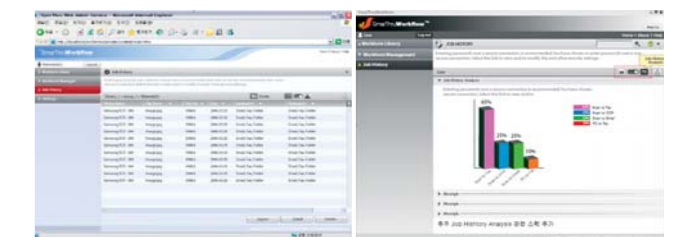
SmarThru™ Office

In offices with complicated network with a variety of equipment, SmarThru's document management and editing features provide convenience and ease for users. Network scan is also provided as default.



SmarThru™ Workflow (Option)

SmarThru™ Workflow streamlines the document capture-process-route system enabling easy document management. This additional software is provided with the Samsung Network Scan Kit.



JScript™ (Printing Open Platform) Introduction

JScript™ is a standardised, common platform that makes it possible to integrate solutions into an organisation's printers and MFPs and helps companies make the most of their printing investment. This embedded communication platform makes it simple to build on personalised solution packages that meet the needs of individual companies.

