

Samsung professional-grade small-sized displays

DB10E-T and DB10E-POE

Small, versatile digital signage for impactful targeted messaging



Enhance the customer experience with impactful, up-close message delivery

Highlights

- Enhance the customer experience by effectively delivering engaging, personalized messaging at the point-of-sale (POS) with sleek, space-saving LED displays.
- Operate effectively in business and commercial environments with high durability, a longer lifespan, a 2-year warranty multiple connectivity, and easy content creation and management.
- Streamline the display environment and enhance performance with an all-in-one solution featuring embedded Samsung SMART Signage Platform (SSSP) 3.0 and media player, built-in Wi-Fi*.
- Heighten customer engagement in any retail setting with an advanced, interactive touchscreen solution.*
- Simplify installation and experience convenient usage with Power-over-Ethernet (PoE) technology and an adapter-less PoE+ module that delivers connectivity and power through a single cable.**
- Rely on a proven display leader that offers a B2B product roadmap, top-notch customer service and extensive global coverage.

* Available on DB10E-T model only

** Available on DB10E-POE model only

Target messages in a dynamic way with small-scale digital signage

As information-hungry consumers increasingly expect personalized, on-demand services, the use of small-sized digital signage is becoming more prevalent in various business environments.

Small screens offer versatility, enabling them to be placed in intimate and tighter locations, providing up-close, individualized messages targeted for specific products and services. The result is a deeper, differentiated in-store experience through proximate, interactive communication that boost sales performance.

Small digital displays can also include a touchscreen and mobile solution for a more interactive and pleasurable customer experience. Touch interaction empowers consumers to search for the information they need, and is highly effective in engaging with product details. Additionally, information that frequently changes can be remotely updated in real time.

Samsung professional-grade, small-sized displays offer a comprehensive lineup to suit virtually any need or budget. With 10.1-inch displays, the DB10E models provide tablet convenience in professional-grade devices.

The Samsung DB10E-T model features interactive touchscreen functionality and built-in 5W speaker that provides an engaging and effective way for customer to find detailed product information. For simple installation and convenient usage, the DB10E-POE model features Power-over-Ethernet (PoE) technology and an adapter-less 30watt PoE module module delivering a network connection and power supply through a single cable.

Rely on professional-grade displays designed for commercial usage

Experience highly reliable professional-grade displays

Consumer-grade displays are not designed for continuous usage, which is an important factor when considering the commercial use of any digital display. Samsung small-sized displays are specifically engineered for highly reliable, 16/7 operation, ideal for long-term commercial use in business environments, and deliver high brightness levels of up to 450 nit, depending on the model.*

Consumer-grade displays such as tablets or other consumer devices, lack the durability to withstand the elements and punishment of commercial applications. However, Samsung professional-grade, small-sized displays are robust enough to withstand heat, cold, dust, vandalism and constant, sometimes rough, customer use.



Figure 1. Interactive touchscreen for more engaging experience

In addition, Samsung small-sized displays have embedded management software, which allows users to easily create rich content and manage the displays remotely over a network. The signage is also equipped to handle multiple connectivity options.

Although consumer-grade displays might seem economical in the short term, the displays inevitably become costly in the long run, when they break down unexpectedly, with voided or expired warranties. In contrast, Samsung small-sized displays are backed by a 2-year warranty.

The DB10E Series commercial-grade displays offer value-added features, such as touch functionality and easy installation with Power-over-Ethernet (PoE) technology**, unlike consumer-grade displays.

An increasing number of businesses are seeking commercial-grade, small-sized displays due to the displays' versatility, effectiveness and operational efficiency.

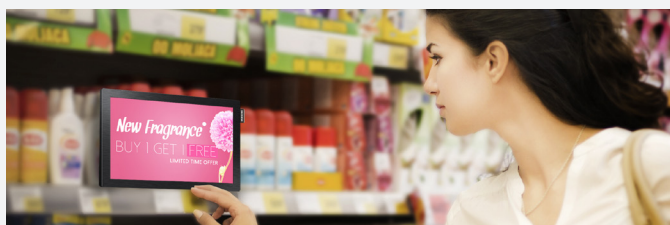
* DB10E-T model: 400 nit, DB10E-POE model: 450 nit

**Available in DB10E-POE model only

Deliver engaging messaging to suit various vertical market needs

Deliver targeted messaging with shelf-edge displays

Small-sized displays can present digital messaging on store shelves or counters to promote sales items. They can also offer detailed merchandise information, such as suggestions for similar available products or how-to-use advice. Plus, built-in speakers or audio out enable these versatile displays to deliver audio messaging for greater impact. Small-sized displays on counters or tables in quick service restaurants (QSRs) provide an easy, convenient way for diners to browse menu selections and place orders.



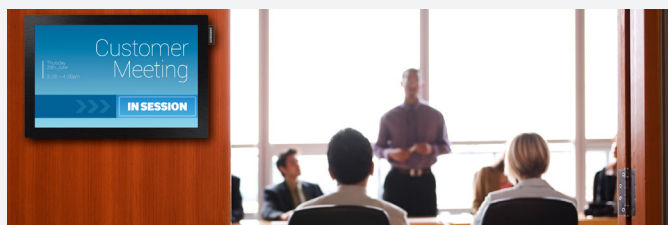
Enhance branding and messaging with POS Kiosk/Vending Machine displays

Professional-grade small-sized displays located at a Point of Sale (POS) enable powerful brand and product messaging opportunities that can engage and inform customers in a more personalized, enjoyable way. Small-sized displays can be used in vending machines to display company or product advertisements as well as provide customers with an intuitive touch screen for easy navigation.



Offer up-to-the-minute information with meeting room schedule displays

Personnel can stay informed of meetings, appointments or conferences with versatile, small-sized displays placed on walls outside meeting rooms or classrooms. Large enterprises or universities can use small displays in offices or campuses to post announcements, class schedules, last-minute rescheduling or any information that changes frequently, in near-real time.



Provide service information with Electronic Information Boards

Doctors' offices and hospitals can use small-sized displays to educate patients about health information or post scheduling information in the waiting room. Placed on the reception desk in lobbies of hospitals and outpatient clinics, small-sized displays are ideal for delivering instructions, facility maps and service information to visitors. When equipped with interactive touchscreens, the small signage can be used for searchable directories.



Leverage powerful performance for efficiency and viewer engagement

Attract and engage customers with professional-grade small signage

Because of their compact size, Samsung small-sized displays can be used in close proximity to customers to capture their attention and engage them in activities or product information. The applications are virtually limitless. Samsung small-sized displays are designed to deliver powerful, targeted messages with rich content and interactive features to captive audiences in intimate environments.

Boost power and functionality with SSSP 3.0

Samsung small-sized displays boast the SSSP 3.0 an integrated hardware and software solution that features an embedded media player with powerful quad-core System on Chip (SoC) technology. This robust platform streamlines digital signage configurations and management by eliminating the need for an additional PC. In addition, it features 8 GB of memory for flexible, convenient and easy storage. The result is an uncluttered and simplified digital signage setup that smoothly delivers rich, high-resolution media content, as well as enhanced operational efficiency and lower total cost of ownership (TCO).

Samsung SMART Signage Platform 3.0

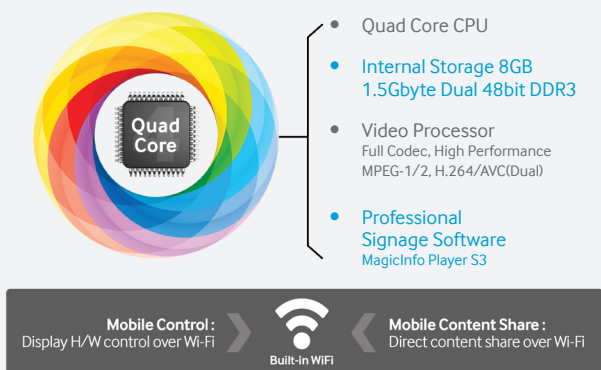


Figure 2. Robust capabilities of SSSP 3.0

Streamline display and content management with MagicInfo S3

The DB10E Series SSSP 3.0 boosts business revenues with professionally polished content created using the embedded Samsung MagicInfo® S3 content management solution. Along with widgets and stickers, the solution provides six free fonts in 23 styles. The new MagicInfo S3 eliminates single-font formatting limitations with the ability to upgrade and select from various free fonts or add user-selected fonts. For convenience and straightforward content changes, users can apply handy stamps, along with preset or user-generated, text-editable stickers to update promotional information and price tags. Content can be enriched through eye-catching transitions with Dynamic Effect, a feature that enables slideshow-type effects, such as fade, fly-on and zoom. Plus, a drag-and-drop widget solution can be used to add widgets simply, such as AccuWeather®, which displays one-day and one-week weather forecasts for the ultimate in professional content presentations.

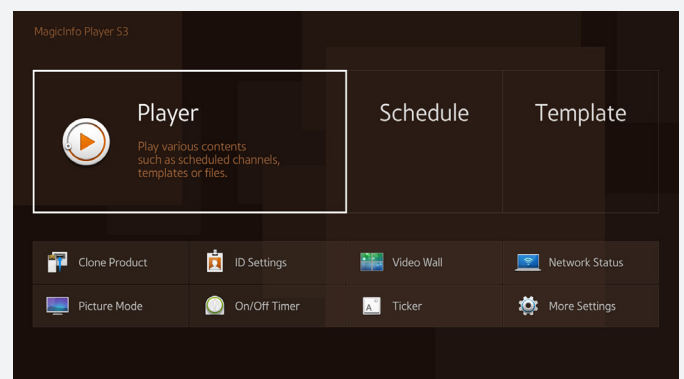


Figure 3. Samsung small-sized display dedicated Home UI design

Simplify display installation with Power-over-Ethernet (PoE)

Ensure effective communication with crisp and clear images

Samsung engineered several features into its small-sized displays that ensure effective communication through bright and clear images. Samsung's picture-quality enhancer, with advanced features that include Color Enhancer, Detail Enhancer, Contrast Enhancer and Color Temperature controls, delivers crisp, clear picture quality. The displays also feature high brightness with the DB10E-T model providing 400-nit brightness while the DB10E-POE model boasts 450-nit brightness for vivid, impactful display images.

In addition, various color modes can be used and optimized for a variety of environments, such as inside shops and malls, offices and schools, or terminals and stations.

The anti-burning function enables the same image to be displayed for more than thirty minutes without burning the screen. This function is ideal when using the display as an e-catalogue or price tag.

Ease installation and usage with Power-over-Ethernet

The DB10E-POE model features PoE+ (IEEE 802.3 at standard) with a 30W module enabling power to be sent through a single Ethernet line. By eliminating the need for a power adapter, displays can be installed more easily and flexibly even in small, hard to reach areas and helps to create a clutter free display environment and convenient usage.

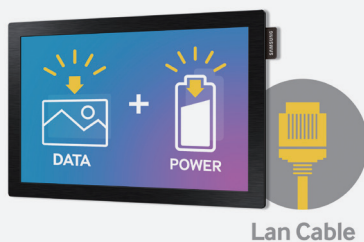


Figure 4. PoE technology enables streamlined installation and convenience

Utilize extended connectivity options and support

The DB10E Series enables businesses to access a broad range of digital content with powerful connectivity options that include HDMI®, USB downstream/upstream*, audio-out, RJ45 and RS-232C in. Along with full connectivity support, content presentation options can be further expanded with flexibility and convenience through built-in Wi-Fi connectivity.*

* USB upstream and built-in Wi-Fi connectivity are available in DB10E-T model only.

Simplify networking with a built-in Wi-Fi module

A convenient, built-in Wi-Fi module provides users with a simplified way to control the small-sized displays and wirelessly distribute content using mobile devices for convenient content management.

Built-in Wi-Fi eliminates the need to locate a PC to connect to the display or find the right cable connections. Users can easily send and schedule display content directly from a mobile device* through mobile app**.

* Compatible with
- Mobile devices with Android™ (4.4.2 or above)
- Mobile devices with iOS® (8.0 or above)

** MagicInfo Express Content Creator 2.0
- Downloadable in Google Play™ store and Apple App Store™
- Will be released for Tablet in June 2015, and for Mobile Phone in 3Q 2015.



Figure 5. Users can manage and distribute content using mobile devices

Deliver interactive and engaging experience with touchscreen functionalities

Engage viewers with an interactive touch solution

The DB10E-T model features a dynamic touch solution powered by the processor's SoC technology and embedded SSSP 3.0, eliminating the need for an external PC. Included MagicInfo S3 software provides a Home UI with touch capability along with remote control, which means an additional remote controller is not required. The touchscreen feature encourages customer interaction and engagement, allowing them to search for information about products or services. The slim bezel touchscreen provides virtually distraction-free viewing so the customer can focus on the message, not the equipment delivering it.

Elevate the decor with a slim design and logo tag

Samsung small-sized displays boast a slim, sleek design with an elegant logo tag for a sophisticated look. The modern, black matte finish exudes style and improves the ambiance of any environment. The attractive display's slim multi-dimensional 14.1 mm bezel not only maximizes the display area but enables flexible installation in landscape and portraits modes.

Leverage the advantages of the Samsung global brand

When choosing a digital signage provider, you can rely on Samsung's solid reputation as a global technology leader. Samsung is a world-renowned brand in electronics and a major display brand power with an extensive B2B product roadmap.



With B2B-suited customer service for commercial environments and global coverage, Samsung delivers superior products and solutions that work seamlessly together, all backed by superb engineering and customer support.

In addition, Samsung small-sized displays are backed by a 2-year warranty.

Samsung professional-grade small-sized displays

-DB10E-T, DB10E-POE

Specifications

			DB10E-T	DB10E-POE
				
Panel	Diagonal Size		10.1"	10.1"
	Type		60Hz E-LED BLU	60Hz E-LED BLU
	Resolution		1,280 x 800	1,280 x 800
	Pixel Pitch (mm/in.)		0.1695 x 0.1695 (0.006 x 0.006)	0.1695 x 0.1695 (0.006 x 0.006)
	Active Display Area (mm/in.)		217.0 x 135.6 (8.5 x 5.3)	217.0 x 135.6 (8.5 x 5.3)
	Brightness (Typ.)		400 Cd/m2	450 Cd/m2
	Contrast Ratio (Typ.)		900:1	900:1
	Viewing Angle (H/V)		178:178	178:178
	Response Time (G-to-G)		30ms	30ms
	Display Colors		16.7M	16.7M
Color Gamut		50%	50%	
Display	Dynamic C/R		50,000:1	50,000:1
	H-Scanning Frequency		30 ~ 81kHz	30 ~ 81kHz
	V-Scanning Frequency		48 ~ 75HZ	48 ~ 75HZ
	Maximum Pixel Frequency		148.5MHz	148.5MHz
Sound	Speaker Type		Built in Speaker(5W x 1)	N/A
Connectivity	INPUT	RGB	N/A	N/A
		VIDEO	HDMI®1	HDMI®1
		AUDIO	N/A	N/A
		USB	USB 2.0 x 2 (Up x 1, Down x1)	USB 2.0 x 1
	OUTPUT	RGB	N/A	N/A
		VIDEO	N/A	N/A
		AUDIO	Yes	Yes
		Power Out	N/A	N/A
EXTERNAL CONTROL		RS232C(in) thru stereo jack, RJ45	RS232C(in) thru stereo jack, RJ45	
Power	Type		Adapter	Adapter
	Power Supply		AC 100 - 240 V~ (+/- 10 %), 50/60 Hz	PoE+ (30W) / AC 100 - 240 V~ (+/- 10 %), 50/60 Hz
	Power Consumption	Max[W/h]	24.2W	29.8W
		Typical[W/h]	18.0W	18.0W
		BTU(Max)	82.5W	67.5W
		Sleep mode	0.5W	0.5W
		Off mode	0.5W	0.5W
Mechanical Spec	Dimension (mm/in.)	Set	246.8 x 165.2 x 27.9 (9.7 x 6.5 x 1.0)	246.8 x 165.2 x 27.0 (9.7 x 6.5 x 1.0)
		Package	300.0 x 205.0 x 79.0 (11.8 x 8.0 x 3.1)	300.0 x 205.0 x 79.0 (11.8 x 8.0 x 3.1)
	Weight (kg/lb)	Set	0.7 (1.5)	0.7 (1.5)
		Package	1.5 (3.3)	1.5 (3.3)
	VESA Mount		75 x 75	75 x 75
	Protection Glass		N/A	N/A
	Stand Type		N/A	N/A
	Media Player Option Type		Embedded	Embedded
Bezel Width (mm)		Top,Side,Bottom: 14.1 (0.5)	Top,Side,Bottom: 14.1 (0.5)	

Samsung professional-grade small-sized displays

-DB10E-T, DB10E-POE

Specifications

		DB10E-T	DB10E-POE
Operation	Operating Temperature	0°C~ 40°C	0°C~ 40°C
	Humidity	10% ~ 80%	10% ~ 80%
Feature	Special	H/W	Temperature Sensor, Portrait Installation Support, Button Lock, Clock Battery(80hrs Clock Keeping), Built in Speaker, WiFi Module Embedded, SD Card Slot, Touch(5 Point, 2 Drawing)
		S/W	Temperature Sensor, Portrait Installation Support, Button Lock, Clock Battery(80hrs Clock Keeping),SD Card Slot, PoE+ (IEEE 802.3 at standard)
	Special		Magic Clone(to USB), Auto Source Switching & Recovery,RS232C/RJ45 MDC,Plug and Play (DDC2B), Image Rotation, Built In MagicInfo Player S3, Firmware Update by Network, SMART Signage New Home Screen, Predefined Templates for Vertical Usage,Mobile Control, Event Schedule, Backup Player
			Magic Clone(to USB), Auto Source Switching & Recovery,RS232C/RJ45 MDC,Plug and Play (DDC2B), Image Rotation, Built In MagicInfo Player S3, Firmware Update by Network, SMART Signage New Home Screen, Predefined Templates for Vertical Usage,Mobile Control, Event Schedule, Backup Player,
	Processor		Cortex®-A9 1GHz Quad Core CPU
			Cortex®-A9 1GHz Quad Core CPU
	On-Chip Cache Memory		L1 (I/D) : 32KB / 32KB
			L2 (Unified) : 512KB
	Clock Speed		1GHz CPU Dual
			1GHz CPU Dual
	Main Memory Interface		1.5GB Dual 32bit DDR3-667 (1333MHz)
			1.5GB Dual 32bit DDR3-667 (1333MHz)
Internal Player (Embedded H/W)	Graphics		2D & 3D Graphics Engine - Up to 1920x1080. 32bpp - Supports OpenGL ES®
			2D & 3D Graphics Engine - Up to 1920x1080. 32bpp - Supports OpenGL ES®
	Storage (FDM)		8GB
			8GB
	Multimedia		Video Decoder - MPEG-1/2, H.264/AVC (Dual) - VC-1, JPEG, PNG Audio DSP (Decoder) - AC3 (DD), MPEG, DTS and etc.
			Video Decoder - MPEG-1/2, H.264/AVC (Dual) - VC-1, JPEG, PNG Audio DSP (Decoder) - AC3 (DD), MPEG, DTS and etc.
	IO Ports		USB 2.0
			USB 2.0
Certification	Safety		Linux®
			Linux®
	EMC		UL (USA) : UL 60950-1 CSA (Canada) : CSA C22.2 No. 60950-1 NOM (Mexico) : NOM-019-SCFI-1998 CB (EU) : IEC60950-1, EN60950-1 KC (Korea) : K60950-1 PSB (Singapore) : IEC60950-1 EAC (Russia) : IEC60950-1 S-Mark (Argentina) : IEC60950 SASO (Saudi Arabia) : IEC60950
			UL (USA) : UL 60950-1 CSA (Canada) : CSA C22.2 No. 60950-1 NOM (Mexico) : NOM-019-SCFI-1998 CB (EU) : IEC60950-1, EN60950-1 KC (Korea) : K60950-1 PSB (Singapore) : IEC60950-1 EAC (Russia) : IEC60950-1 S-Mark (Argentina) : IEC60950 SASO (Saudi Arabia) : IEC60950
Environment	Environment		FCC (USA) : 47 CFR Part 15, Subpart B CE (Europe) : EN55022, EN55024 VCCI (Japan) : VCCI V-3 /2014.04 KC (Korea) : KN22, KN24 BSMI (Taiwan) : CNS 13438(EN 55022) C-Tick (Australia) : AS/NZS CISPR22 : 2009+A1:2010 CCC (China) : GB9254-2008;GB17625.1-2012
			FCC (USA) : 47 CFR Part 15, Subpart B CE (Europe) : EN55022, EN55024 VCCI (Japan) : VCCI V-3 /2014.04 KC (Korea) : KN22, KN24 BSMI (Taiwan) : CNS 13438(EN 55022) C-Tick (Australia) : AS/NZS CISPR22 : 2009+A1:2010 CCC (China) : GB9254-2008;GB17625.1-2012
Accessories	Included		N/A
			N/A
Accessories	Included		Quick Setup Guide, Warranty Card, Regulatory guide, Power Cord, Adapter, Remote Controller, Batteries, RS232C-Stereo cable, Stand Bar
			Quick Setup Guide, Warranty Card, Regulatory guide, Power Cord, Adapter, Remote Controller, Batteries, RS232C-Stereo cable, Stand Bar

Samsung DB10E-T SMART Signage

Touch-enabled, small digital signage
for enhanced interaction



Highlights

- Enhance the customer experience with sleek, space-saving LED displays at the point of sale.
- Operate effectively in commercial environments with durability, longevity, multiple connectivity, and easy content creation and management.
- Streamline the display environment and enhance performance with an all-in-one solution.
- Heighten customer engagement in any retail setting with an advanced, interactive touchscreen solution.
- Rely on a proven display leader that offers a B2B product roadmap, top-notch customer service and extensive global coverage.

Engage viewers with an interactive touch solution

The DB10E-T model features a dynamic touch solution powered by the processor's SoC technology and embedded SSSP 3.0, eliminating the need for an external PC. Equipped with slim bezel and built-in speaker, DB10E-T is an optimal solution for an interactive, distraction free and personalized customer experience by delivering messages more effectively.

Empower with SSSP 3.0 and Samsung's trusted brand renowned for reliability

Samsung small-sized displays boast the SSSP 3.0 an integrated hardware and software solution that features an embedded media player with powerful quad-core System on Chip (SoC) technology. This robust platform streamlines digital signage configurations and management by eliminating the need for an additional PC. In addition, it features 8 GB of memory for flexible, convenient and easy storage.

Rely on the dependability of Samsung professional-grade displays

Unlike consumer electronics, Samsung small-sized displays are designed to withstand the rigorous work hours of a commercial environment.

The technological power of the DB10E-T is backed by Samsung's reputation for engineering reliable, cutting-edge digital signage. Its leadership in the industry has made it a global powerhouse in serving the B2B industry and a name that is trusted worldwide.

Samsung DB10E-T SMART Signage

Specifications

			DB10E-T
Panel	Diagonal Size		10.1"
	Type		60Hz E-LED BLU
	Resolution		1,280 x 800
	Pixel Pitch (mm/in.)		0.1695 x 0.1695 (0.006 x 0.006)
	Active Display Area (mm/in.)		217.0 x 135.6 (8.5 x 5.3)
	Brightness (Typ.)		400 Cd/m2
	Contrast Ratio (Typ.)		900:1
	Viewing Angle (H/V)		178:178
	Response Time (G-to-G)		30ms
	Display Colors		16.7M
	Color Gamut		50%
Display	Dynamic C/R		50,000:1
	H-Scanning Frequency		30 ~ 81kHz
	V-Scanning Frequency		48 ~ 75HZ
	Maximum Pixel Frequency		148.5MHz
Sound	Speaker Type		Built in Speaker(5W x 1)
Connectivity	INPUT	VIDEO	HDMI®1
		USB	USB 2.0 x 2 (Up x 1, Down x1)
	OUTPUT	AUDIO	Yes
	EXTERNAL CONTROL		RS232C(in) thru stereo jack, RJ45
Power	Type		Adapter
	Power Supply		AC 100 - 240 V~ (+/- 10 %), 50/60 Hz
	Power Consumption	Max[W/h]	20.9W
		Typical[W/h]	19W
		BTU(Max)	64.8W
		Sleep mode	0.5W
		Off mode	0.5W
Mechanical Spec	Dimension (mm/in.)	Set	246.8 x 165.2 x 27.9 (9.7 x 6.5 x 1.0)
		Package	300.0 x 205.0 x 79.0 (11.8 x 8.0 x 3.1)
	Weight (kg/lb)	Set	0.7 (1.5)
		Package	1.5 (3.3)
	VESA Mount		75 x 75
	Protection Glass		Yes
	Media Player Option Type		embedded
Operation	Bezel Width (mm/in.)		Top,Side,Bottom: 14.1 (0.5)
	Operating Temperature		0°C~ 40°C
Feature	Humidity		10% ~ 80%
	Special	H/W	Temperature Sensor, Portrait Installation Support, Button Lock, Clock Battery(80hrs Clock Keeping), Built in Speaker, WiFi Module Embedded, SD Card Slot, Touch(5 Point, 2 Drawing)
		S/W	Magic Clone(to USB), Auto Source Switching & Recovery,RS232C/RJ45 MDC,Plug and Play (DDC2B), Image Rotation, Built In MagicInfo Player S3, Firmware Update by Network, SMART Signage New Home Screen, Predefined Templates for Vertical Usage,Mobile Control, Event Schedule, Backup Player
	Internal Player (Embedded H/W)	Processor	Cortex®-A9 1GHz Quad Core CPU
		Storage (FDM)	8GB
Certification	Safety		UL, CSA, NOM, CB, KC, PSB, EAC, S-Mark, SASO
	EMC		FCC, CE, VCCI, KC, BSMI, C-Tick, CCC

Samsung DB10E-POE SMART Signage

Small, easy-to-deploy digital signage
with Power-over-Ethernet



Highlights

- Enhance the customer experience with sleek, space-saving LED displays at the point of sale.
- Operate effectively in commercial environments with durability, longevity, multiple connectivity, and easy content creation and management.
- Streamline the display environment and enhance performance with an all-in-one solution.
- Simplify installation and usage with Power-over-Ethernet (PoE) technology that delivers power and connectivity through a single cable.
- Rely on a proven display leader that offers a B2B product roadmap, top-notch customer service and extensive global coverage.

Ease installation and usage with Power-over-Ethernet

The DB10E-POE model features PoE+ (IEEE 802.3 at standard) with a 30W module enabling power to be sent through a single Ethernet line. By eliminating the need for a power adapter, displays can be installed more easily and flexibly even in small, hard to reach areas and helps to create a clutter free display environment.

Empower with SSSP 3.0 and Samsung's trusted brand renowned for reliability

Samsung small-sized displays boast the SSSP 3.0 an integrated hardware and software solution that features an embedded media player with powerful quad-core System on Chip (SoC) technology. This robust platform streamlines digital signage configurations and management by eliminating the need for an additional PC. In addition, it features 8 GB of memory for flexible, convenient and easy storage.

Rely on the dependability of Samsung professional-grade displays

Unlike consumer electronics, Samsung small-sized displays are designed to withstand the rigorous work hours of a commercial environment. Plus, Samsung small-sized displays deliver effective messaging for your business.

The technological power of the DB10E-POE is backed by Samsung's reputation for engineering reliable, cutting-edge digital signage. Its leadership in the industry has made it a global powerhouse in serving the B2B industry and a name that is trusted worldwide.

Samsung DB10E-POE SMART Signage

Specifications

			DB10E-POE
Panel	Diagonal Size		10.1"
	Type		60Hz E-LED BLU
	Resolution		1,280 x 800
	Pixel Pitch (mm/in.)		0.1695 x 0.1695 (0.006 x 0.006)
	Active Display Area (mm/in.)		217.0 x 135.6 (8.54 x 5.33)
	Brightness (Typ.)		450 Cd/m2
	Contrast Ratio (Typ.)		900:1
	Viewing Angle (H/V)		178:178
	Response Time (G-to-G)		30ms
	Display Colors		16.7M
	Color Gamut		50%
Display	Dynamic C/R		50,000:1
	H-Scanning Frequency		30 ~ 81kHz
	V-Scanning Frequency		48 ~ 75HZ
	Maximum Pixel Frequency		148.5MHz
Connectivity	Input	VIDEO	HDMI®1
		USB	USB 2.0 x 1
	Ouput	AUDIO	Yes
	EXTERNAL CONTROL		RS232C(in) thru stereo jack, RJ45
Power	Type		Adapter
	Power Supply		PoE+ (30W) / AC 100 - 240 V~ (+/- 10 %), 50/60 Hz
		Max[W/h]	20.9W
		Typical[W/h]	19.0W
	Power Consumption	BTU(Max)	64.8W
		Sleep mode	0.5W
		Off mode	0.5W
Mechanical Spec	Dimension (mm/in.)	Set	246.8 x 165.2 x 27.0 (9.7 x 6.5 x 1.0)
		Package	300.0 x 205.0 x 79.0 (11.8 x 8.0 x 3.1)
	Weight (kg/lb)	Set	0.7 (1.5)
		Package	1.5 (3.3)
	VESA Mount		75 x 75
	Protection Glass		No
	Media Player Option Type		embedded
Operation	Bezel Width (mm/in.)		Top,Side,Bottom: 14.1 (0.5)
	Operating Temperature		0°C~ 40°C
Feature	Humidity		10% ~ 80%
	Special	H/W	Temperature Sensor, Portrait Installation Support, Button Lock, Clock Battery(80hrs Clock Keeping),SD Card Slot, PoE+ (IEEE 802.3 at standard)
		S/W	Magic Clone(to USB), Auto Source Switching & Recovery,RS232C/RJ45 MDC,Plug and Play (DDC2B), Image Rotation, Built In MagicInfo Player S3, Firmware Update by Network, SMART Signage New Home Screen, Predefined Templates for Vertical Usage,Mobile Control, Event Schedule, Backup Player,
	Internal Player (Embedded H/W)	Processor	Cortex®-A9 1GHz Quad Core CPU
		Storage (FDM)	8GB
Certification	Safety		UL, CSA, NOM, CB, KC, PSB, EAC, S-Mark, SASO
	EMC		FCC, CE, VCCI, KC, BSMI, C-Tick, CCC

Legal and additional information

About Samsung Electronics Co., Ltd.

Samsung Electronics Co., Ltd. inspires the world and shapes the future with transformative ideas and technologies, redefining the worlds of TVs, smartphones, wearable devices, tablets, cameras, digital appliances, printers, medical equipment, network systems and semiconductors. We are also leading in the Internet of Things space through, among others, our Digital Health and Smart Home initiatives. We employ 307,000 people across 84 countries. To discover more, please visit our official website at www.samsung.com and our official blog at global.samsungtomorrow.com.

For more information

For more information about the Samsung Professional-grade small-sized displays, visit www.samsung.com/business or www.samsung.com/displaysolutions.

Copyright © 2015 Samsung Electronics Co., Ltd. All rights reserved. Samsung and MagicInfo are registered trademarks of Samsung Electronics Co., Ltd. Specifications and designs are subject to change without notice. Non-metric weights and measurements are approximate. All data were deemed correct at time of creation. Samsung is not liable for errors or omissions. All brand, product, service names and logos are trademarks and/or registered trademarks of their respective owners and are hereby recognized and acknowledged.

AccuWeather is a registered trademark of AccuWeather, Inc.

HDMI, the HDMI logo, and High-Definition Multimedia Interface are trademarks or registered trademarks of HDMI Licensing, LLC in the United States and other countries.

ARM and Cortex are trademarks or registered trademarks of ARM Ltd. or its subsidiaries.

Linux is a registered trademark of Linus Torvalds.

OpenGL ES is a trademark of Silicon Graphics, Inc. in the United States and/ or other countries worldwide.

Android is a trademark of Google Inc.

iOS is a trademark or registered trademark of Cisco in the U.S. and other countries and is used under license.

Google Play is a trademark of Google, Inc.

Apple App Store is a service mark of Apple, Inc.

Samsung Electronics Co., Ltd.
129 Samsung-ro, Yeongtong-gu,
Suwon-si, Gyeonggi-do 443-742,
Korea

www.samsung.com

2015-10