

---

# Flash Programmer by JTAG

## User's Manual

(S3F40K/S3F4A1H/S3F4A2F Guide)

---



<b>Title</b>	<b>Internal program flash programming</b>
<b>Keywords</b>	S3F4A0K,S3F41H,S3F4A2F, flash, programmer, JTAG
<b>Abstract</b>	This is a guide for flash programming through JTAG.

Copyright © 2008 Samsung Electronics Co, Ltd. All Rights Reserved.

Though every care has been taken to ensure the accuracy of this document, Samsung Electronics Co, Ltd. cannot accept responsibility for any errors or omissions or for any loss occasioned to any person, whether legal or natural, from acting, or refraining from action, as the result of the information contained herein. Information in this document is subject to change at any time without obligation to notify any person of such changes.

Samsung Electronics Co, Ltd. may have patents or patent pending applications, trademarks copyrights or other intellectual property rights covering subject matter in this document. The furnishing of this document does not give the recipient or reader any license to these patents, trademarks copyrights or other intellectual property rights.

No part of this document may be communicated, distributed, reproduced or transmitted in any form or by any means, electronic or mechanical or otherwise, for any purpose, without the prior written permission of Samsung Electronics Co, Ltd.

The document is subject to revision without further notice.

All brand names and product names mentioned in this document are trademarks or registered trademarks of their respective owners.

Contact Address:

Samsung Electronics Co., Ltd.  
San#24 Nongseo-Ri, Giheung\_Eup,  
Yongin\_City, Gyeonggi-do, Korea 449-711

Tel: (82)-(031)-209-4956  
Fax: (82)-(031)-209-6494

Home Page: <http://www.samsungsemi.com>  
Contact us: [como.jin@samsung.com](mailto:como.jin@samsung.com)  
[younghee46.won@samsung.com](mailto:younghee46.won@samsung.com)

MCU Design Team,  
Chipcard & Microcontroller,  
System LSI Division,  
Semiconductor Business  
Samsung Electronics Co., Ltd.

## Revision History

Date	Version	Author	Amendment
Oct. 23 2006	0.0	Younghee Jin	Created first version
Mar.12 2007	0.2	Younghee Won	Updated version
Nov.10 2008	0.3	Younghee Won	added MyAXD.ses configuration method





# 1. Flash Programmer

## OVERVIEW

This is a guide for programming of internal program flash through jtag.  
This flash programmer is used to download a binary file into embedded flash of

- S3F4A0K (AGP1)
- S3F4A1H (AGP2)
- S3F4A2F (AGP3)

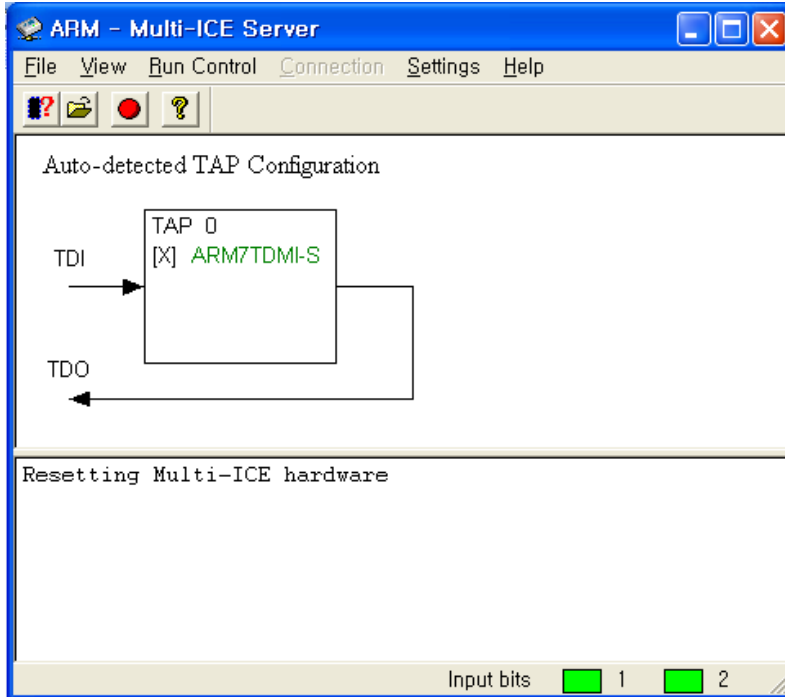
## REQUIEREMENTS

- AXD (at least v1.2 version) tool suite
- A JTAG box compatible with AXD suite (MultilICE, EmbestICE)
- MultilICE install deirectory should be 'C:\Program Files\ARM\Multi-ICE'.
- AUTO CONF\_AGP.CFG should be under the following directory  
*C:\Program Files\ARM\Multi-ICE.*

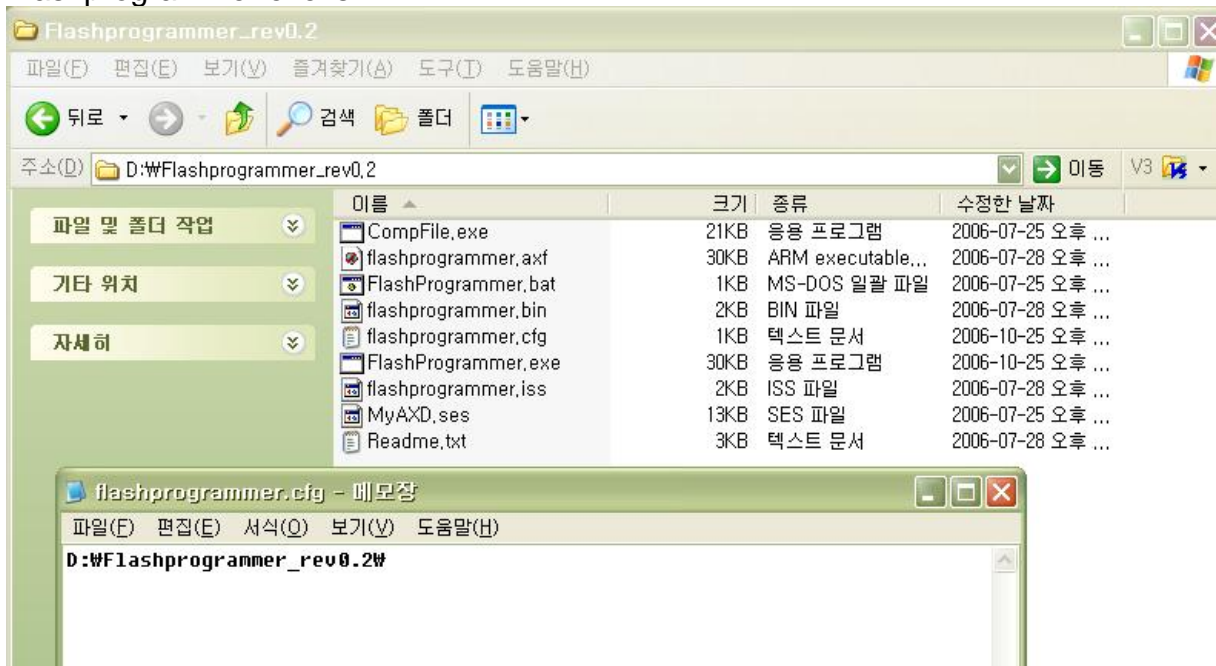
## 2. Programming

**STEP 1:** Connect the target evaluation board and Multi-ICE JTAG.

**STEP 2:** Execute a Multi-ICE Server like that.



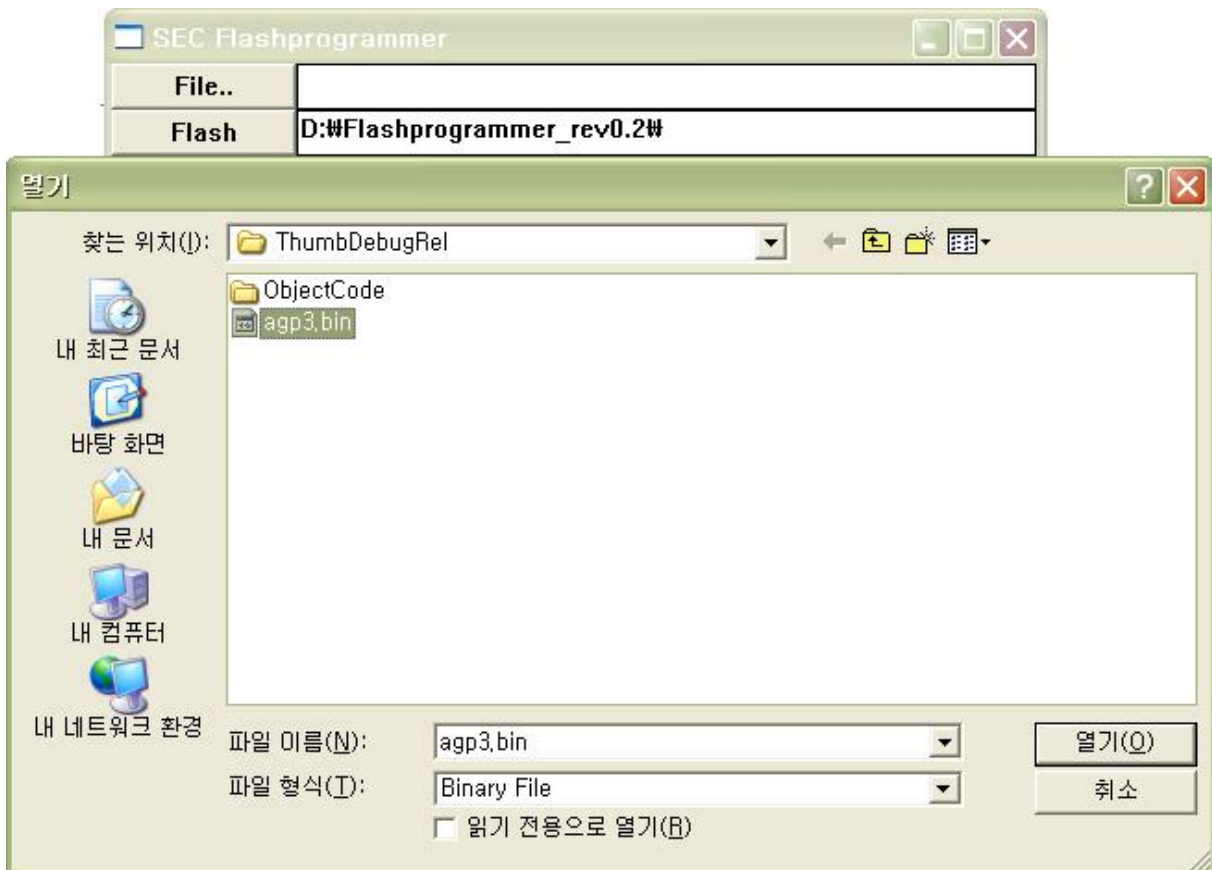
**STEP 3:** Open a *Flashprogrammer.cfg* file and write the path of directory where Flashprogrammer.exe is in.



**STEP 4:** Execute the file, *Flashprogrammer.exe*.

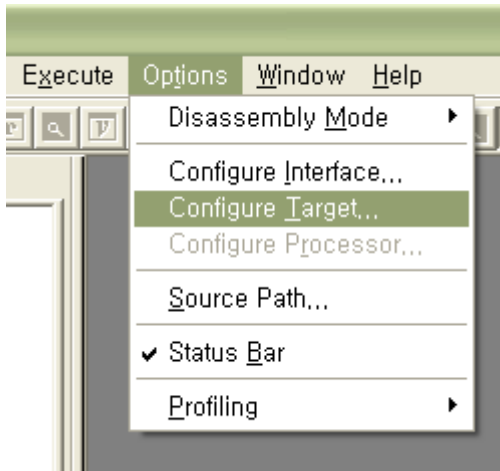


**STEP 5:** Click the button, *File...* And select the target bin file.  
Click the *Flash* button to start programming.

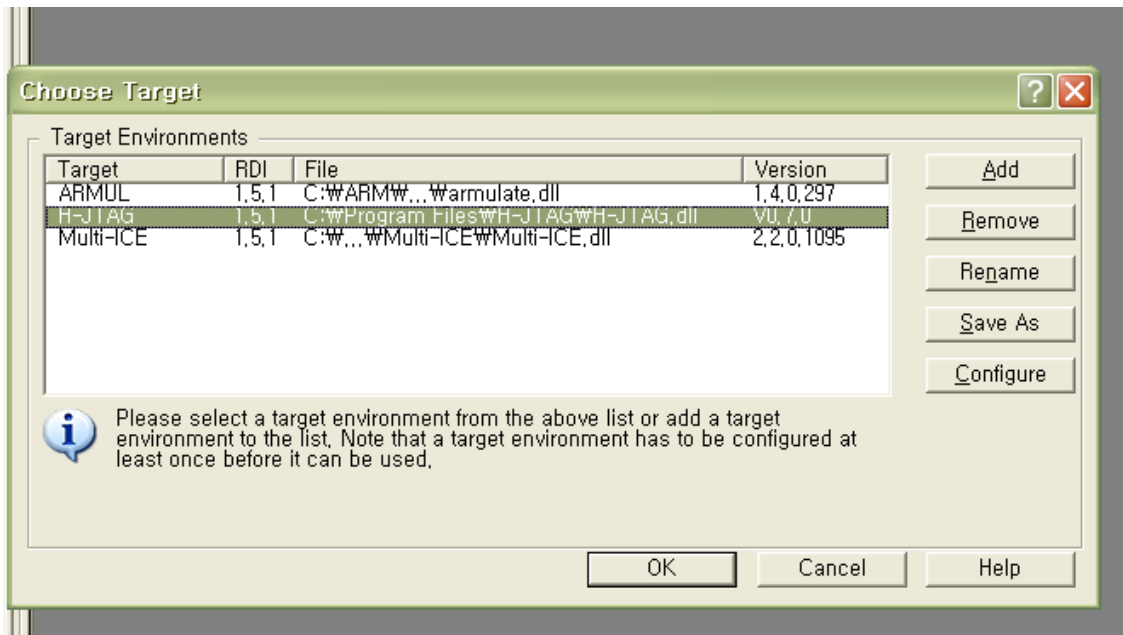


**STEP 6: Make a MyAXD.ses**

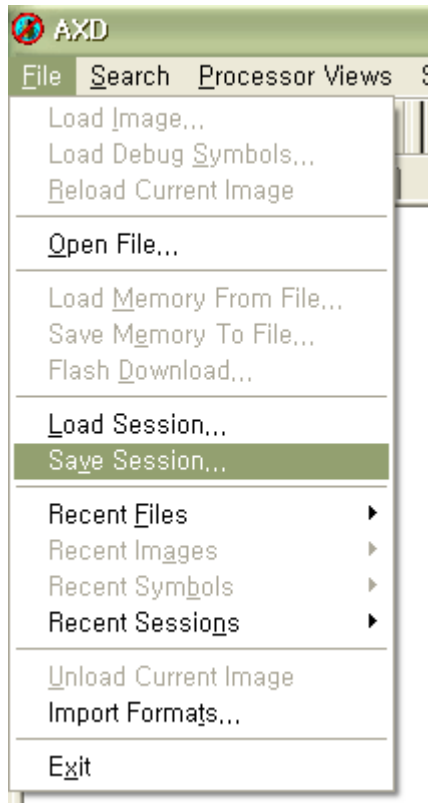
Execute the AXD debugger. Select target emulator from Options->Configure Target..



Select target which is connected to evaluation board.

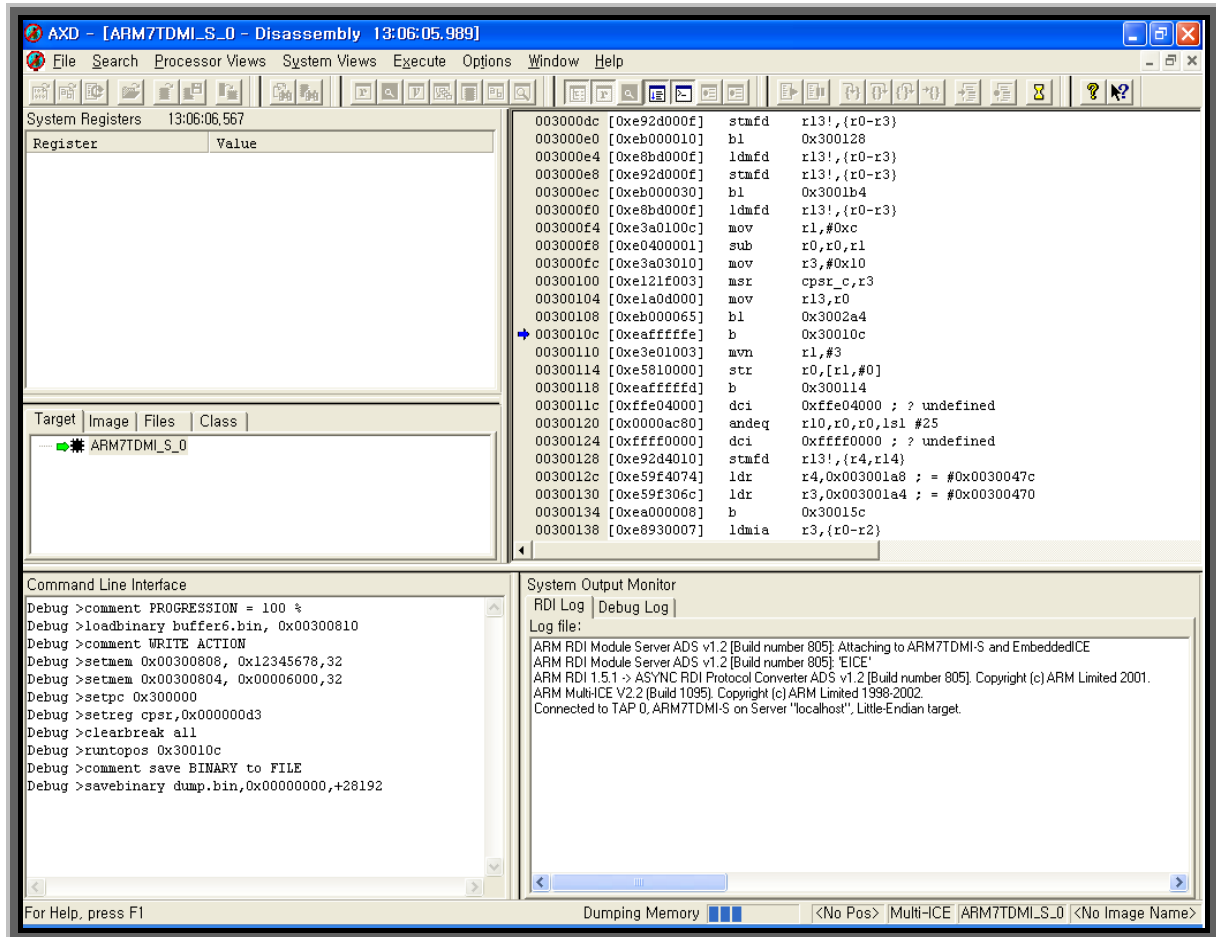


STEP 7: Select *File->Save Session* menu. Overwrite *MyAXD.ses* in same folder with *Flashprogrammer.exe*



**STEP 8:** Flash button Click

**STEP 9:** AXD will be opened automatically, and executed the flash program function. You can see commands that are executed through Command Line Interface.



**STEP 10:** After programmed and verified, AXD will be closed automatically. When you push the reset on the target board, you can see the operation of code programmed by this flash programmer.