

HL-T7288W

72" New Slim Depth Widescreen DLP® HDTV
with 1080p HDTV Resolution



The HL-T7288S HDTV turns your home into a movie theater, with a huge 72" screen – Samsung's largest DLP® – and Full HD (1920 x 1080p) resolution. An ultra-thin, piano-black bezel lets you enjoy more screen and less frame; combined with its slim depth, light weight and hidden speaker system, it fits where others won't™. Samsung's Cinema Smooth™ light engine delivers the widest range of brilliant colors, while a 10,000:1 dynamic contrast ratio renders every picture in perfect detail, from the darkest darks to brightest whites, and every tone in between. SRS TruSurround XT™ delivers sound that is clear and full. Three HDMI inputs in version 1.3 render your digital movies, photos and more with greater color depth. CEC capability lets you control other Samsung CEC equipped peripherals using one remote; the set can also interface with other devices via Bluetooth™ technology. Game Mode optimizes performance, so avid gamers will marvel at the lifelike color and sound; fast, 120Hz switching makes it ready for 3D and other future technologies. And even with all these advanced features, the HL-T7288W is remarkably energy-efficient.

SLIM DLP®

TV/Video

- DLP® HDTV by Samsung
- Ultra slim bezel, "piano black" cabinet
- Slim depth – fits where others won't™
- Samsung Cinema Smooth™ 1080p light engine:
 - Full HD 1920 x 1080p digital format converter for all inputs
 - Up to 10,000:1 contrast ratio with outstanding colors and deep black levels
 - Single-panel design—crystal-clear picture without any possibility of convergence errors
 - Smooth, film-like image and ultra-quiet operation
- Analog and full digital NTSC/ATSC Tuners with Clear QAM (digital cable)*
- Energy Star® Compliant (0.8 Watt standby)
- Hidden speaker system (DACS™)
- Picture in Picture
- Bluetooth™ capability for wireless headphones
- Game Mode enhances game console performance
- 3D HD ready—Future-proof your HD experience
- RS232 port for system control

Audio

- 10w x 2
- SRS TruSurround XT™

Connections

- 3 HDMI inputs (High Definition Multimedia Interface) version 1.3 with CEC with 480i/480p/720i/1080p/1080i input support
- 2-component video inputs (480i/480p/720p/1080i/1080p)
- 2 S-video inputs
- 2 A/V composite inputs
- 1 USB 2.0
- PC (RGB) input with 1080p Input Support

Options

- Floor stand: TR72B



OFFICIAL HDTV OF THE NFL

* limited reception varies by cable operator.

All on screen images are simulated pictures. DLP® is a trademark of Texas Instruments.

DLP tv

HL-T7288W 72" New Slim Depth Widescreen DLP® HDTV with 1080p HDTV Resolution

Integrated HDTV Tuner

with the addition of a suitable UHF/VHF antenna delivers the world of free off-air DTV and HDTV local broadcast channels. An additional QAM tuner decodes unscrambled digital cable signals.

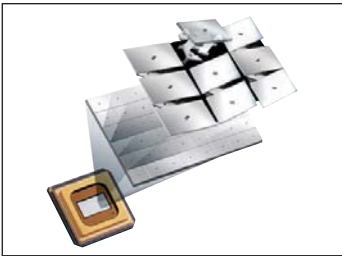
Cinema Smooth™ Light Engine

Samsung is the worldwide leader in creating light engines that harness Digital Light Processing technology. Samsung's Cinema Smooth light engine brings together the right optics, electronic circuitry and replaceable light source to create a brilliant picture that's more lifelike and much closer to film. Now in its sixth generation, Samsung's Cinema Smooth light engine delivers crisp, 1080p High Definition resolution with high contrast and brightness, defined edges and sharp detail.



Cinema Smooth 1080p Light Engine

Samsung's Cinema Smooth 1080p light engine is the culmination of years of industry-leading research and development. It releases the maximum power of the new generation of DMD microdisplays for the most film-like picture. It creates an image with no visible pixel structure and accurate shading and better low-light detail.



Next Generation DLP Chips from Texas Instruments

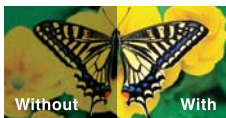
Samsung employs a Texas Instruments DLP chip that is comprised of millions of microscopic mirrors. The DLP chip is faster than any other HDTV technology, with the mirrors switching on & off 15,000 times a second to deliver a razor-sharp picture for fast moving images. When combined with Samsung's new Cinema Smooth light engine, the result is a crisp, bright picture with deep, rich colors that's closer to film.



Faster 5 Segment Color Wheel for High Contrast and Brightness

Samsung's 2.2" color wheel spins at 14,400 rpm for smooth fast-motion video, and has five color segments for more accurate colors. Comprised of five colors, Red, Green, and Blue, plus Cyan and Yellow, it achieves film-like transitions and eliminates the pixel breakup found in slower color wheel designs and slower-switching LCD microdisplays. The Cinema Smooth™ light engine uses a whisper quiet air bearing design.

DNi^e™



Samsung's DNi^e™ – Digital Natural Image Engine

Samsung's exclusive Digital Natural Image engine makes the sharpest and clearest images possible, regardless of the profile of input signals. Five image processors and a six-times density enhancer ensure the best picture from any source. Now in its sixth generation (since 2002), DNi^e guarantees the truest colors and highest contrast, while virtually eliminating digital artifacts.

My Color Control

You can get the pink tones, the green of the grass and the blue of the sky just the way you like, without affecting the other colors on the screen. The three major colors can be adjusted to perfectly fit your taste. Self expression meets display perfection.

HL-T7288W

Cinema Mode

Samsung's Cinema Mode lets you see colors the way the director intended, by matching them more closely to production standards. This creates more accurate colors and natural skin tones when viewing Hollywood movies on your TV—the perfect setting when enjoying movies with the lights off.



Interlaced



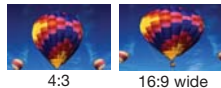
Progressive Cinema



Progressive

Cinema Smooth™ Film Mode 3:2 Pull Down

Powered by Samsung's Cinema Smooth technology, 3:2 Pull Down corrects for the artificial frames created when films are converted to DVDs. The result is a clearer image without the subtle motion artifacts caused by 24-to-30 frames per second video conversion.



4:3

16:9 wide



Zoom 1

Zoom 2

Picture Format Size Adjustment

Enjoy all your 4:3 aspect-ratio programming in smooth, wide-screen without black bars. Four pre-set aspect ratio modes—Normal, Wide, Zoom 1 and Zoom 2—stretch your image to fill the screen naturally.

Energy Efficient

Samsung DLP TVs are more energy efficient than many flat panel TVs, resulting in significant utility savings over the life of the TV.

Color Temperature Adjustments

Cool1, Cool2, Normal, Warm1, Warm2 selectable with on-screen display.

3D Comb Filter

dramatically reduces edge image artifacts while improving transition detail.

Previous Channel

returns to the previously viewed channel at the push of a button.

Game Mode

enhances dark areas, sharpens the picture, speeds up the image processing response and enhances the sounds of your games. Picture and sound quality optimized for the special needs of gaming systems at the touch of a button.

Closed Caption

displays dialog that can be read along with encoded broadcast TV programs and pre-recorded videos.

Non Volatile Memory

preserves audio, video and menu settings during power outages.

Auto Volume Leveler

keeps audio volume consistent during channel changing to minimize static sound bursts.

Discrete IR Codes

This set is equipped with discrete IR codes for use with an optional macro/programmable remote (see owners manual for details).

Universal Remote Control

permits control of the TV, DVD, VCR and a Tuner/Receiver.



HDMI (High-Definition Multimedia Interface)

addresses both pure digital audio and video performance and simplifies connections from the new generation set-top boxes, HD game consoles, HD Blu-ray™ and DVD players by reducing cable connections to one cable and plug.



DTV and DVD Compatible Connect

your DVD and DTV sources with two smart component video (Y/Pb/Pr) inputs that accept 480p/720p/1080i/1080p signals.



PC

A Samsung HDTV using DLP technology can also function as a high-quality WUXGA PC monitor with 1080p compatibility.

HL-T7288W

72" New Slim Depth Widescreen DLP® HDTV
with 1080p HDTV Resolution

Features

3D HD ready. The HLT generation of Samsung DLP® HDTVs are capable of displaying future 3D games, movies, and other programming via 3D compatible glasses and hardware.

Picture-in-Picture (PIP) enables convenient simultaneous viewing of TV programs and video or PC sources.

Bluetooth™ Privately listen to TV with wireless Bluetooth enabled headset.

SRS TruSurround XT™. TruSurround is a patented SRS technology that solves the problem of playing 5.1 multichannel content over two speakers. TruSurround delivers a compelling, virtual surround sound experience through any two-speaker playback system, including internal television speakers and headphones. It is fully compatible with all multichannel formats up to 6.1 channels.

V-Chip¹ enables parental control for channel and program blocking of TV programs that incorporate the rating code signal.

Specifications

DISPLAY PERFORMANCE

Video display rate: 120 Hz

Response time: 16 micro seconds

VIDEO

Display device: Single digital micro mirror device

Pixel count:

1920 horizontal x 1080 vertical

Resolution: 1080p

Contrast ratio: 10,000:1

Channel coverage: VHF 2-13, UHF 14-69, CATV 1-125 (up to 181 pre-selected channels), ATSC 1-69

AUDIO

Output power: 10Wx2

Speakers: 2

Sound effect system: TruSurround XT™
MTS stereo

Hidden speaker system (DACS™)

1080p input support

RS232 system control

POWER

Voltage, Line frequency: 100-120V
60Hz

Power consumption: 230 Watts

Standby power consumption: 0.8 Watt

Connections

HDMI (High-Definition Multimedia Interface): 3

DVI Audio In: 1 (For HDMI port 3)

Component video input (Y,Pb,Pr): 2

S-Video input: 2

Composite input: 2 (RCA)

RF input: 2

Video Output: 1 (RCA)

Audio out: 2 (RCA L/R + Optical)

USB: 1

PC Input: 1 (Mini Jack)

Bluetooth™ (Wireless)

Quality

Warranty: 1 year parts and labor warranty, including lamp, with in-home service backed by Samsung toll-free support. 1-800-SAMSUNG

Energy Star® Compliant reduces energy consumption by up to 25% compared with standard TVs.²

Accessories

Universal Remote Control

Net dimensions and weight (WxHxD)

TV (w/o foot): 65.8" x 46.8" x 19.2"

TV weight: 108 lbs.

TV (w/ foot): 65.8" x 46.8" x 20.4"

Shipping dimensions and weight (WxHxD)

Carton: 71.7" x 25.0" x 51.7"

Carton weight: 141.8 lbs

Order code

HLT7288SX/XAA

UPC

036725272880

Optional stand: (WXHXD) TR72B

Net dimensions:

65.79" x 19.69" x 18.39"

Net weight: 106.9 lbs.

Shipping dimensions:

71.5" x 21.25" x 6.5"

Shipping weight: 115.5 lbs.

UPC: 036725296206

Order code: TR72B/XAA

¹Feature dependent upon broadcasting of information by local off-air TV and cable channels.

²As an Energy Star® partner, Samsung has determined that this product meets the Energy Star® guidelines for energy efficiency. Energy Star® is a registered trademark of the U.S. Environmental Protection Agency.

Design and specifications are subject to change without notice. Non-metric weights and measurements are approximate.

DLP, and the DLP logo are registered trademarks or trademarks of Texas Instruments.

HDMI, the HDMI logo and High Definition Multimedia Interface are trademarks or registered trademarks of HDMI Licensing LLC.

SRS TruSurround XT is a registered trademark of SRS Labs, Inc.

DNLe™, Cinema Smooth™ and fits where others won't™ are trademarks of Samsung Electronics Co., Ltd.

©2007 NFL Properties LLC. All NFL-related trademarks are trademarks of the National Football League.

©2007 Samsung Electronics America, Inc. All rights reserved Samsung is a registered trademark of Samsung Electronics Co., Ltd. All product and brand names are trademarks or registered trademarks of their respective companies.
107-SS Printed in USA.

For more information on digital TV technology please visit www.samsung.com/dtvguide